

*A Heart for*

# HME

Community Foundation for Northeast Michigan  
2018 Annual Report

# 2018 Annual Report Table of Contents

2	A Message from the Board President
3-8	New Funds Established in 2018
9-18	Community Foundation Programs
9	Community Impact Grants
10	Northeast Michigan Women's Giving Circle
13-14	CFNEM and Affiliate Scholarship Program
15	Youth Advisory Council Program
16	Nonprofit Capacity Building
17-18	Giving Tuesday Northeast Michigan
19-22	Affiliate Foundations
23-24	2018 Financial Summary / Grants Summary
25-26	CFNEM and Affiliate 2018 Grantees



100 N. Ripley, Suite F • P.O. Box 495  
Alpena, MI 49707  
Phone: 989-354-6881 • Toll Free: 877-354-6881  
Fax: 989-356-3319 • [cfnem.org](http://cfnem.org)

## Our Affiliates:



## A Message from the Board President

“There’s no place like home.” “Home is where your heart is.” “Home isn’t a place; it’s a feeling.” “Home is where your story begins.” “Home sweet home.”



There are so many adages about “home”, and it means something a bit different to everyone. It can be a particular house, the place our loved ones live, or the area we feel most comfortable. No matter where or what we call “home”, one consistency is that we typically care for it deeply.

As we look back on 2018, the Community Foundation for Northeast Michigan and its donors seemed to have a real heart for “home”. With

the unique new funds established during the year, the Foundation’s efforts to strengthen the nonprofits serving our region, the biggest day of local giving in our communities yet, of course, our grants – 2018 was undoubtedly about our northeastern Michigan HOME. Giving Tuesday donations demonstrated the diversity of our communities and the selfless generosity of our region. We have a strong desire to constantly improve our communities and that is happening daily because of you!

One example of this is the new Art Vision Alpena Fund. This fund supports the design and creation of the new public art sculptures going up around Alpena, and it will support all of the future installations and upkeep of each sculpture in perpetuity. Like the majority of funds held at the Community Foundation, it’s intended for the long haul. Leadership will change; investments will fluctuate; and the needs of our communities will evolve over time. But the effects of your investment in “home” will last forever.

We hope you enjoy this 2018 Annual Report. We look forward to seeing more of what our communities do, as we know you all have a “heart for home”.

**Christine Baumgardner**  
2018 CFNEM Board President







# New Funds Established in 2018

## Community Foundation for Northeast Michigan

### Art Vision Alpena Fund

This permanently endowed fund was established by August and Peggy Matuszak. As artists and residents of Alpena, they want to ensure that public art is celebrated and preserved for generations. This fund supports the creation and design of the public works of art being constructed along the Alpena Bi-Path. In addition to their creation, this fund will provide for the upkeep and maintenance of the artworks in perpetuity.

### Friends Together Fund

Friends Together started with a deep passion for ensuring that no one has to endure the struggles of cancer alone. In 2018, the organization's leaders decided to establish the Friends Together Fund. As the fund grows through donations and investment, this cancer support nonprofit will receive annual income to support their needs. With thousands of people impacted by this organization, either as a cancer victim or a cancer survivor, this fund also provides donors with an opportunity to support Friends Together for generations to come.

### Presque Isle Lighthouses Restoration Fund

The "Old" and "New" lighthouses along the Lake Huron shoreline in Presque Isle are treasured by locals and visitors alike. The natural landscape, history and even ghost stories draw people to these northeast Michigan landmarks year-round. With both lighthouses and their adjacent keeper's houses in desperate need of repair, Presque Isle Township and the Presque Isle Township Historical Museum partnered to create this special project fund at CFNEM to raise money for restoration expenses. Once completed, the fund will be used as an endowment to maintain the structures forever.

### Hubbard Lake Preserve Fund

When John and Wendy Frye donated an 80-acre piece of property in Alcona County to Huron Pines in 2018, the organization turned the land

into its first nature preserve. Located on beautiful Hubbard Lake, the preserve is meant to become a recreational and educational destination for people of all ages. This fund will allow Huron Pines to turn the property into a publicly accessible nature preserve, and to maintain the property forever.



### Kenya REAL Ministries Fund

Home doesn't always have geographic boundaries. This endowed fund is the Community Foundation's first fund providing international grants. A small group of passionate Rogers City residents, as well as others throughout the nation, created Kenya REAL (Reach/Empower/Act/Love). Through their mission work, volunteers have given their own dollars and personal time to help children have the best education, opportunities and care possible in their village of Kaptembwa - the fourth largest slum in Kenya.

*Photos: Scott McLennan and his daughter Paige McLennan on a mission visit to Kaptembwa, Kenya.*

### North Point Conservation, Education and Recreation Fund

It was big news when it was announced that the large North Point property on the outer edge of Thunder Bay was being donated, and eventually to be used for public use. This new fund was established to support the management and development of the North Point property for conservation, education, research and sustainable recreation, all of which will fall under the leadership of the Friends of Thunder Bay National Marine Sanctuary.

### Thunder Bay Theatre Capital Campaign Fund

Long-standing as the only professional theater in northern Michigan, entertaining locals and drawing visitors from across Michigan, Thunder Bay Theatre (TBT) has found itself in need of a host of renovations and improvements. In 2018, TBT announced its new Capital Campaign to achieve their goals, and established a special project fund to help. In early 2019, TBT was able to kick off Phase I of the project with an overhaul of

its lobby, in part because of their success in the Community Foundation’s Giving Tuesday event. Once the entire campaign is complete, TBT will create and build an endowed fund at CFNEM to support the theater.

**Alpena First United Methodist Church**

This endowed fund will support the general operating needs of Alpena First United Methodist Church.



Hubbard Lake Preserve, photo by Tom Cadwalader,  
courtesy of Huron Pines





### **First Congregational Comstock Endowment Fund**

This endowed fund will support the general operating expenses for First Congregational Church in Alpena.

### **Hantz Preservation Fund**

This fund was established to ensure the care and preservation of the Hantz Preservation Site wetlands in Montmorency County. The fund will provide long-term stewardship of the site, currently under the care of Headwaters Land Conservancy.

### **Jim Hart Music Scholarship Fund**

This scholarship was established in memory of Jim Hart, a former music teacher at Alpena Public Schools. The scholarship is for 9th-11th grade Alpena High School vocalists who wish to attend programs where they can further their vocalist studies.

### **Michael and Billi Murch Memorial Scholarship Fund**

This scholarship fund was established to support the educational needs of graduating students from Posen High School.

### **Presque Isle Township Museum Society Fund**

This fund is used to care for and educate the public about the historical collections and maritime structures in Presque Isle Township, which include the Old and New Presque Isle Lighthouses, 1905 Keeper's House Museum, and Harbor Range Light.

### **Annele Johnson Richards Fund**

This fund will provide scholarships for students graduating from Alpena High School who plan to attend any school in Michigan to study in a STEM field.

### **Jean Sanborn Memorial Fund**

This fund will provide scholarships for graduating seniors of Alcona High School planning to study music in college or music conservatory. Preference may be given to vocalists.

# North Central Michigan Community Foundation

## Clarice L. Sperry Scholarship Fund

This fund will provide scholarships to graduating seniors of Ogemaw Heights High School interested in studying Public Administration with a career goal of entering the field of Public Service.

## AuSable Valley Animal Shelter Fund

This permanently endowed fund will support the needs of the AuSable Valley Animal Shelter in Grayling, Michigan, serving Crawford County and its surrounding communities.

# Iosco County Community Foundation

## Patti Casey Library Science Education Fund

This endowment fund will provide educational opportunities for staff of the Iosco-Arenac District Library to attend training in the field of library science.



*Harrisville Harbor, Alcona County*

# Community Foundation Programs

## Community Impact Grant Program

Twice annually, the Community Foundation for Northeast Michigan awards grants through the Community Impact Grant Program, funded by the Community Endowment Fund, and supplemented by many other designated funds for particular geographic or field-of-interest areas. These grants support

a broad range of projects and nonprofits in Alcona, Alpena, Montmorency and Presque Isle Counties. Each of our affiliate foundations awards Community Impact Grants for their specific region each year as well.

**\$152,527**  
awarded in Community  
Impact Grants throughout  
CFNEM and its affiliate  
service areas in 2018.

“These grants come from funds that are ‘unrestricted’, and are among the most important funds held at the Community Foundation,” said CFNEM Board President Christine Baumgardner. “They allow us to meet our communities’ needs as they evolve. 25 years ago, these funds were providing grants to help local nonprofits move into the computer era. Today, some of these grants are funding laptops and Chromebooks for our local students.”

There is no crystal ball to predict what these Community Impact Grants will support in the future, but we do know we can have a greater impact with our communities’ full support of these unrestricted funds.



*Presque Isle District Library's Northeast Exposure  
Music Series - \$2,679 Community Impact Grant*



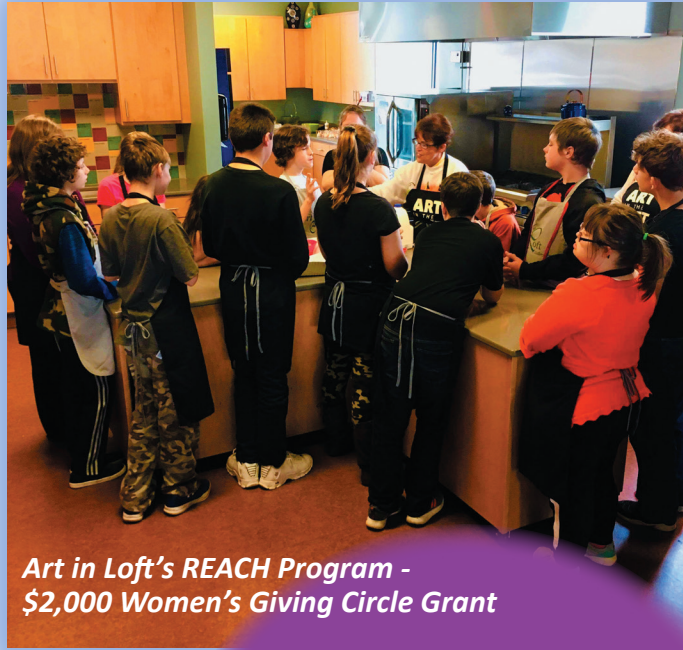
# Northeast Michigan Women's Giving Circle (WGC)

The WGC is inspiring women across northeast Michigan to give back! This program is proof of the power of collective giving, and the incredible things that can be done when people who care about a cause work together to support it. Gifts from \$10 to \$300,000 make up the pool of assets providing grants each year, and for generations to come.

With a focus on issues important to women, \$25,095 was granted in 2018 from the WGC Fund to give diapers and baby supplies to local baby pantries, provide assistance to victims of domestic violence, support leadership and confidence-building programs for young girls, fund STEM education for elementary students, and much more.

At greater than 400 members strong, the WGC has involved many women directly in the grantmaking process, as WGC members make up the grant screening committee.

"Members get to truly be part of something bigger than themselves," said CFNEM Program Director Julie Wiesen. "The fact that there is limitless potential to what this fund will do for future generations is part of what makes it so exciting!"



*Art in Loft's REACH Program -  
\$2,000 Women's Giving Circle Grant*

Northeast Michigan  
Women's Giving Circle





CFNEM Grants (top, left to right):

- *Alpena Street Performers' Downtown Series - \$5,000 Community Impact Grant*
- *Inspiration Alcona's Quilt Trail Project - \$1,000 Community Impact Grant*
- *Boys and Girls Club of Alpena's Youth Volunteer Corps Program - \$2,000 Community Impact Grant*
- *Hillman High School's "Guys and Gals Exploring Greece" Trip - \$4,500 NE MI Youth Advisory Council Grant*
- *Sunrise Side Girls on the Run, Rogers City - \$5,000 Community Impact and Women's Giving Circle Grants*
- *St. Vincent de Paul of Alcona County's New Roof - \$5,000 Community Impact Grant*

**\$2,762,865**  
in grants for Alcona,  
Alpena, Montmorency and  
Presque Isle Counties

**539**  
Grants from 126  
charitable funds

HOME

Thunder Bay River, Alpena County



# \$438,457

awarded in scholarships for  
students from CFNEM and  
its Affiliate Foundations.





# CFNEM & Affiliate Scholarship Program



"It is because of the generosity of the donors, the support of the community, and the love and compassion of the families gathered here that you wonderful young people are being recognized for your achievements." - Adam Crowell, 2018 Scholarship Keynote Speaker, Crowell Family Scholarship Fund

Left, Adam Crowell; Right, Connon Family Scholarship

## Youth Advisory Councils (YAC)

Growing a new generation of philanthropists and teaching the importance of giving are at the heart of the Community Foundation's Youth Advisory Council (YAC) programs. Through the YAC program, grantmaking is put directly into the hands of our young YAC members who witness and experience the difference their decisions make in the lives of their fellow youth and their families.

Of the nine counties served by CFNEM and its Affiliate Foundations, each one benefits from having a local YAC. Combined, our nine counties have over 160 YAC members who oversaw the decisions of \$107,296 in grants in 2018.

In addition to grantmaking, our YAC members participate in community service activities, projects to encourage donations to the endowed Kellogg Youth Funds from which their grants are awarded, and leadership building opportunities such as service on the Foundation's Board of Trustees and attendance at a summer youth grantmakers conference.

*Clockwise from top left: Alpena County YAC; Thunder Bay Junior High YAC community service project; Presque Isle County YAC; Montmorency County YAC*





# Capacity Building for Non Profits

## Leadership Learning Lab

For eight months, nine northeast Michigan nonprofit leaders participated in the Leadership Learning Lab, facilitated by NorthSky Nonprofit Network. Meeting monthly, the cohort took deep dives into fund development, adaptive leadership, storytelling and more. Peer support and problem solving was an important part of the program. The 2018 cohort was the first of three through this partnership between CFNEM, the Otsego Community Foundation and the Roscommon County Community Foundation. Additional funding support was provided by the Frey Foundation.



## Nonprofit Leaders Series

In 2018, CFNEM partnered with Huron Pines and the Otsego Community Foundation to bring four capacity-building trainings to Alpena and Gaylord. The trainings included two “Board Basics” sessions and two communications-based sessions including “Better Stories by Design” and “Marketing for Nonprofits: How to Begin Doing a Lot with a Little”. CFNEM is committed to the Nonprofit Leader Series through 2019.



Congratulations to all!

\$156,058

1,226 donations

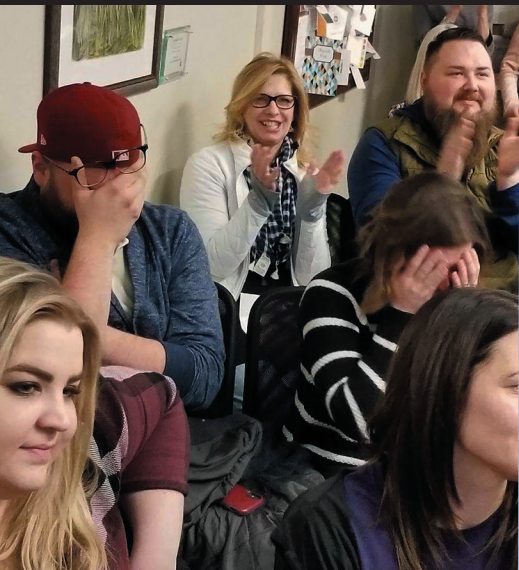


CHIGAN



# GIVE

#GIVINGTUESDAYNEMI





# Giving Tuesday Northeast Michigan

In CFNEM's fourth year leading the Giving Tuesday movement in Northeast Michigan, over \$156,000 was raised in 24 hours to support over 50 nonprofits throughout the nine-county service area.

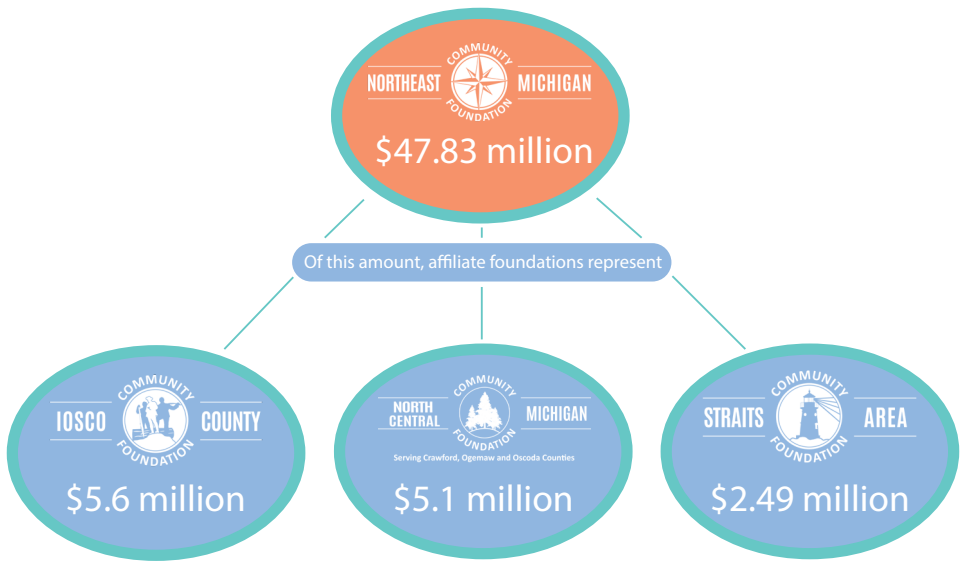
"Grant" the Giving Tuesday Golden Goose is awarded each year to the organization raising the most money on Giving Tuesday. In 2018, Grant went to Thunder Bay Theatre, which used the funds to complete renovations of their box office. The Theatre's social media and word-of-mouth promotion of their participation in the campaign raised over \$14,000 for the nonprofit.

"For organizations who really embrace the social media aspect of the Giving Tuesday movement, and especially of promoting their participating in Giving Tuesday Northeast Michigan, it can provide a real boost in funding at a critical time of year for many nonprofits," said Christine Hitch, CFNEM Marketing Communications Director. "The camaraderie and friendly competition among local nonprofits, and the outpouring of support from donors adds to the fun and philanthropic spirit the movement is meant to create."



# Affiliate Foundations

*CFNEM serves as the lead foundation for three geographic affiliates, providing administration and overall governance. Each affiliate is led by a board of local leaders with a keen understanding of their individual communities' needs.*



*Iosco County 2018 Philanthropist of the Year*

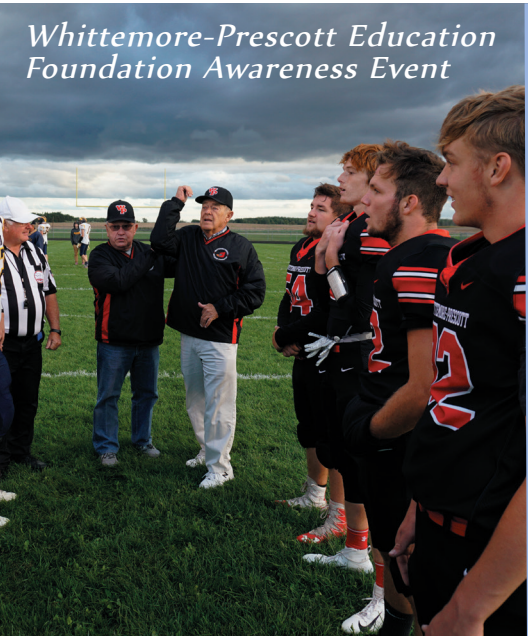


# Iosco County Community Foundation

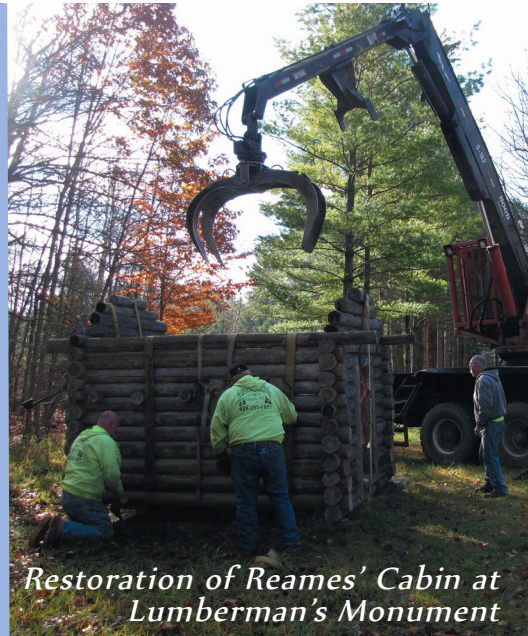
In 2018, the Iosco County Community Foundation (ICCF) honored Nancy Huck with its 7<sup>th</sup> annual Iosco County Philanthropist of the Year award. Nancy is a long-time supporter of the Community Foundation and all of Iosco County. Her efforts were instrumental in getting the Iosco Exploration Trail off to a start, with the nonprofit establishing an endowed fund, and having the official trail groundbreaking in 2018.



ICCF supported its communities with \$11,239 in Community Improvement Grants, and with \$10,404 in grants for youth programs through the Iosco County Youth Advisory Council (YAC). The ICCF Board of Directors spent a great deal of time throughout the year focusing on their grantmaking, with a focus on ways to increase the overall impact their grant funds will have on their communities, as well as increasing giving to the ever-important unrestricted funds that allow changing needs in Iosco County to be met each year.



*Whittemore-Prescott Education Foundation Awareness Event*



*Restoration of Reames' Cabin at Lumberman's Monument*

# North Central Michigan Community Foundation

The North Central Michigan Community Foundation (NCMCF) supported its communities with \$15,450 in Community Impact Grants in Crawford, Ogemaw and Oscoda Counties, and \$20,476 in grants for youth programs through the NCMCF Youth Advisory Councils (YAC).



The NCMCF Oscoda County YAC worked proactively to address the pressing issues of mental health and stress for their fellow youth. In April 2018, the YAC brought Brian Pruitt, a well-received speaker on overcoming obstacles and finding one’s own value. Pruitt presented to Mio and Fairview High School students, as well as parents from Oscoda County.

NCMCF’s Board of Directors worked throughout the year to increase their representation from across the three-county service area, build local awareness, and narrow a grantmaking focus for maximum impact in the North Central Michigan region.

*Bottom photo: West Branch Educational Support Partnership grants*





# Straits Area Community Foundation

SACF supported its communities in 2018 with \$8,620 in Community Improvement Grants, and with \$4,058 in grants for youth programs through the Straits Area Youth Advisory Council (YAC).



SACF also provided \$1,706 in grants specifically for health care programs supporting the residents of Cheboygan County and Mackinaw City.

With over \$2.5 million in assets, SACF serves as the only permanent funder for its specific geographic area. Local board members worked throughout much of the year to ensure grants funded a broad range of programs, helping to create opportunities for recreation, support education programs, and provide for much needed basic human needs. Grants like those pictured below provide opportunities for residents for whom economic or physical abilities may otherwise limit.



*Straits Area Services  
Opportunity Assistance Program*



*Cheboygan County Junior Golf  
Academy Foundation*

## CONDENSED STATEMENT OF ASSETS

(October 1, 2017 to September 30, 2018)

	2018	2017
<b>ASSETS</b>		
Current Assets		
Cash and Cash Equivalents	\$2,117,016	\$1,753,782
Prepaid Assets	6,722	4,943
Pledges receivable – current	65,733	147,167
Allowance for uncollectible pledges – current	(3,705)	(6,128)
Non-Current Assets		
Investments	45,515,714	41,666,405
Long-term pledges receivable	98,813	75,360
Discount on long-term pledges receivable	-	-
Allowance for long-term uncollectible pledges	(5,570)	(3,147)
Property and Equipment, net of accumulated depreciation	<u>36,339</u>	<u>47,671</u>
<b>TOTAL ASSETS</b>	<b>\$47,831,062</b>	<b>\$43,686,053</b>

## CONDENSED STATEMENT OF LIABILITIES AND NET ASSETS

(October 1, 2017 to September 30, 2018)

<b>LIABILITIES</b>		
Current Liabilities		
Accounts & Salaries Payable	\$5,349	\$5,240
Grants Payable	470,420	386,610
Non-Current Liabilities		
Grants Payable – long term portion	97,200	93,850
Funds Held for Agencies	7,048,500	5,332,941
Split Interest Agreements	908,803	1,041,484
<b>TOTAL LIABILITIES</b>	<b>\$8,530,272</b>	<b>\$6,860,125</b>
<b>NET ASSETS</b>		
Unrestricted	2,536,456	2,397,009
Temporarily Restricted	11,685,959	10,432,401
Permanently Restricted	25,078,375	23,996,518
<b>TOTAL NET ASSETS</b>	<b><u>\$39,300,790</u></b>	<b><u>\$36,825,928</u></b>
<b>TOTAL LIABILITIES AND FUND EQUITY</b>	<b>\$47,831,062</b>	<b>\$43,686,053</b>



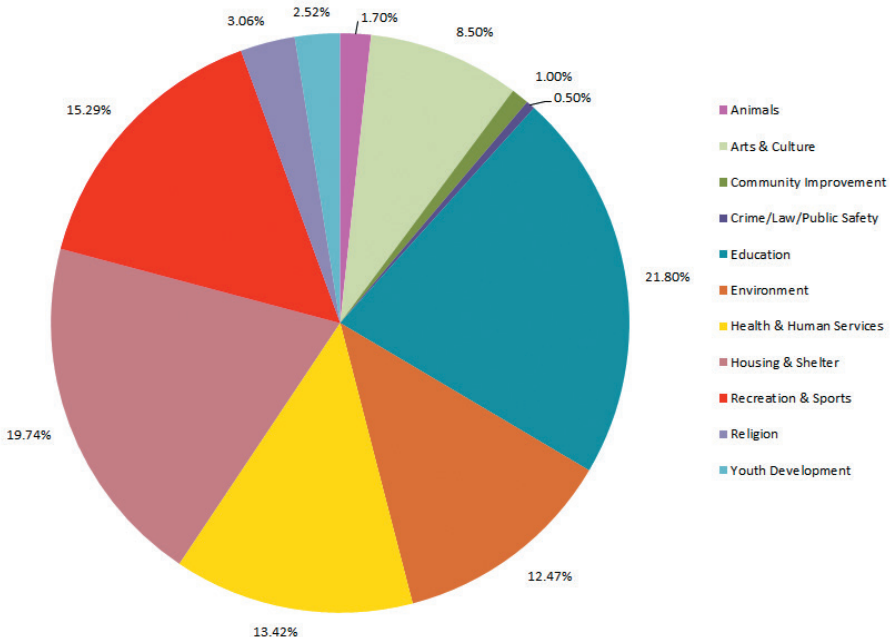
# CONDENSED STATEMENT OF REVENUE AND DISBURSEMENTS

(October 1, 2017 to September 30, 2018)

	2018	2017
<b>REVENUE</b>		
Contributions	\$2,429,466	\$1,992,911
Grants for Administrative Expenses	100,415	96,978
Investment Return	2,649,785	4,564,008
Change in Value of Split Interest Agreements	(534,911)	157,534
<b>TOTAL REVENUE</b>	<b>\$4,644,755</b>	<b>\$6,811,431</b>
<b>DISBURSEMENTS</b>		
Grants and Direct Fund Expenses	1,618,477	1,877,461
Administrative Expenses	544,578	541,670
Trust Fees	6,838	6,010
<b>TOTAL DISBURSEMENTS</b>	<b>\$2,169,893</b>	<b>\$2,425,141</b>

The Community Foundation for Northeast Michigan's most recent IRS Form 990 and annual audit, as well as all policies, are available to the public upon request. The Foundation's IRS Form 990 may also be accessed on the web at [www.guidestar.org](http://www.guidestar.org).

## 2018 CFNEM GRANT SUMMARY



# 2018 Donors

*For donations made January 1, 2018 - December 31, 2018*



Mr. Lance Abbert  
Mr. Harold A. Abbott  
Ms. Bonnie Abend  
Mr. Michael Ableidinger and  
Mrs. Esther Hines Ableidinger  
Ms. Amy J. Abraham  
Ms. Grace Acres  
Jaime L. Adams  
Mark Addington  
Aid By The Dozen Group No. 2  
Alcona Citizens for Health, Inc.  
Alcona FFA Alumni Association  
Ms. Casie Alderman  
Ms. Darlene Alexander  
Mr. and Mrs. Kevin K. Alexander  
Mrs. Carlene Aliferis  
Allegra  
Allianz  
Mr. James R. Allyn  
Alpena Agency, Inc.  
Alpena Alcona Area Credit Union  
Alpena Area Convention &  
Visitors Bureau  
Alpena County  
Alpena Electric Motor Service  
Alpena Garden Club  
Alpena Gymnastics, Inc.  
Alpena Lions Club  
Alpena Power Company  
Alpena Public Schools  
Alpena ROMEO Club  
Alpena Area Senior Citizens  
Council, Inc.  
Alpena Youth Advisory Council  
Mr. and Mrs. Robert D. Alvey  
Amazon Smile  
Ameriprise Financial  
Ms. Malinda Amlotte  
Ms. Carolyn Anderson  
Ms. Lisa Anderson  
Ms. Louise R. Anderson  
Ms. Susan Angeles  
Anonymous  
Mr. and Mrs. James Apsey  
Mr. and Mrs. James Arbuckle  
Drs. Sanjeev and Monika Arora  
Mr. Edward Arscott  
Mr. and Mrs. Robert E. Arthur  
Mr. and Mrs. Dennis M. Artley  
Dr. and Mrs. Avery J. Aten

Mr. Thomas Atkinson  
Mr. Erik Ausland  
Mr. and Mrs. Richard W. Bachelor  
John and Christine Bakalar  
Mr. and Mrs. Matthew Baker  
Mr. Carl Ball  
The Bank of America Charitable  
Foundation  
Ms. Bonnie Banks  
Banner Realty  
Mr. Dennis Bannon  
Ms. Dayna Barbeau  
Ms. Kristine Barnes  
Ms. Vicki S. Barnes  
Mr. and Mrs. Donald G. Barr  
Ms. Lynne Bartley  
Ms. Suelyn Bartz  
Dr. Hasan Basheera  
Christie Bastow and Richard Burke  
Mr. Joseph Bastow and  
Mrs. Julie K. Helms Bastow  
Ms. Denise Bates  
Ms. Kara Bauer LeMonds  
Mr. Roger C. Bauer  
Mr. and Mrs. David L. Bauermeister  
Ms. Gretchen Bauermeister  
Ms. Christine Baumgardner  
Mr. and Mrs. Donald C. Bautel  
Chris Beach  
Ms. Denise Bearre  
Carol A. Beatty  
Dr. David M. Beatty  
Dr. and Mrs. Ronald J. Beatty  
Susan Beatty-Page  
Ms. Crystal Bebout  
Mrs. Donna M. Beck  
Ms. Sarah Bedford  
Mr. and Mrs. Donald G. Beem  
Mr. and Mrs. Terry Bell  
Mr. and Mrs. Larry Bellor  
Benevity Giving Platform  
Benevity, Inc.  
Ms. Kristin Benghauser  
Mr. and Mrs. Charles H. Bennett  
Ms. Julie Benson  
Mr. and Mrs. James Berles  
Ms. Judith A. Besler  
Ms. Teresa Besler  
Besser Company  
Besser Foundation  
Besser Museum for Northeast MI  
Ms. Janet A. Best  
Mr. and Mrs. Duane Beyer  
Mr. Jared Bicker

Jane Bielas  
Ms. Polina K. Biglin Boucher  
Mr. and Mrs. Robert G. Bingle  
Mr. Larry Bishop  
Ms. Meaghan R. Black  
Mr. Gordon M. Bloem  
Mr. Joel Blohm  
Leanne Bloom  
Ms. Shirley Bloom  
Ms. Marcia Bloomfield  
Jamie Boboltz  
Ms. Janice K. Boboltz  
Ms. Tina Boddy  
Mr. and Mrs. Dennis R. Bodem  
Ms. Nancy Boerger  
Boldrey, Senchuk, Rouleau, and  
Williams, CPA's, PC  
Ms. Erin K. Bollinger  
Mr. and Mrs. Benjamin Bolser  
Ms. Lori Bonifas  
Ms. Ashley Borchard  
Mr. and Mrs. Richard A. Borsmann  
Ms. Ann Boucher  
Mr. and Mrs. Carl Bourdelais  
Mr. Todd M. Bowen  
Ms. Kathleen Bower  
Ms. Jacky L. Bowman  
Mr. and Mrs. Paul H. Boyer  
Ms. Rosalyn P. Boyer  
Ms. Bonnie Braden  
Mr. and Mrs. James H. Braden  
Marjorie Brandenburg  
Mr. and Mrs. Patrick Brandt  
Mr. and Mrs. Gordon J.  
Breckenridge  
Mr. Richard Bremer  
Ms. Betty Jo Bresmon  
Mr. and Mrs. Robert A. Brewer  
Mr. and Mrs. James A. Bridenstine  
Mr. and Mrs. William Bridge  
Mr. and Mrs. John E. Briggs  
Mr. and Mrs. Michael F. Briggs  
Mr. and Mrs. Thomas J. Brindley  
Mr. Anthony Brinkman  
Ms. Amy Brisson  
Dr. and Mrs. Lee R. Britton  
Mr. Todd R. Britton  
Ms. Heidi Brockenbrough  
Mr. and Mrs. Stanley  
Brockenbrough  
Mr. Leonard Brockhahn  
Mr. William Brousseau  
D.J. Brown  
Ms. Judith Brown

Mr. Richard Brown  
 Mr. Ryan Brown  
 Mr. Paul Bruce  
 Ms. Carolyn Brummund  
 Ms. Carolyn Bruning  
 Brush Creek Mill, Inc.  
 Mrs. Barbara K. Bruske  
 Mr. and Mrs. Robert J. Buchner  
 Mr. and Mrs. Edward L. Buck  
 Ms. Lori Budnik  
 Dr. and Mrs. James Bullen  
 Thanh Bullock  
 Ms. Judy Burns  
 Mrs. Ann Burton  
 Mr. and Mrs. Frederick Burton Jr.  
 Ms. Elizabeth Bushey  
 Ms. Lee Ann Bushey  
 Ms. Deborah Butler and  
     Mr. Norm Desimone  
 The Butler-VanderLinden Family  
 Cadarette Collision Service  
 Mr. Ronald I. Cady  
 Jennifer Calery  
 Ms. Melissa Cammack  
 Mr. and Mrs. William Camp  
 Mr. and Mrs. Donald Cattleberry  
 Mr. and Mrs. Harvey K. Carden  
 Ms. Colleen M. Carroll  
 Ms. Beth Y. Carusi  
 Judith Case  
 Mr. and Mrs. Steven Casey  
 Ms. Amy Castle  
 Cedar Grove Tavern  
 Mr. and Mrs. Michael A. Centala  
 Mr. Brian Chace  
 The Rev. Elizabeth and  
     The Rev. Brian Chace  
 Ms. Elsie R. Challenger  
 Ms. Shelley Chamberlain  
 Mr. and Mrs. James R. Chapman  
 Mr. and Mrs. Norman L. Charters  
 Mr. and Mrs. Paul Chellberg  
 Ms. Rose Marie C. Chittick  
 Terri Chouinard  
 Ms. Elizabeth Christensen  
 Ms. Tonja Christensen  
 Justin Christensen-Cooper  
 Mr. and Mrs. Wayne  
     Christopherson  
 Mrs. Janet Chroninger  
 Ms. Staci L. Chroninger  
 Mr. and Mrs. Douglas A. Church  
 Ms. Michaela Cisney  
 City of Alpena  
 Jamie Clark  
 Ms. Kaye J. Clark  
 Mr. and Mrs. Larry A. Clark  
 Mr. and Mrs. Michael A. Clark

Mr. and Mrs. Bill Clegg  
 Cliff Anschuetz Chevy Inc.  
 Ms. Susan Cloft  
 Ms. Susan Cohoon  
 Ms. Laura Coleman  
 Ms. Kim Collins  
 Mr. and Mrs. Lawrence J. Compton  
 Mr. Jim Conboy  
 Mr. and Mrs. James I. Conley  
 Mr. and Mrs. Michael R. Connolly  
 Mr. and Mrs. Bruce Connon  
 Mr. David H. Cook  
 Mrs. Nancy A. Cook  
 Mrs. Nancy B. Coombs  
 Dr. and Mrs. Robert Coombs  
 Mrs. Denise L. Cooper  
 Mr. and Mrs. Douglas C. Cooper  
 Mr. James F. Cooper  
 Ms. Judith E. Cooper  
 Mr. and Mrs. Nicholas Cordes  
 Dr. Eric R. Cornish  
 Mrs. Michelle Cornish  
 Ms. Rebecca R. Counsellor  
 Cousineau Plumbing & Heating  
 Mr. Thomas A. Couvreur  
 Mr. David M. Cox  
 Mr. Gerald Coyne  
 Ms. Kathleen Crawford  
 Ms. MaryAnn K. Crawford  
 Ms. Barbara Crittenden  
 Ms. Mary Crittenden  
 Ms. Susan Crockett Hoff  
 Mr. and Mrs. Clarence W. Cross  
 Mr. Andrew Cruise  
 Mr. James R. Cryder  
 Mr. David Cummins  
 Ms. Renee Curry  
 Mr. Kevin L. Curtis  
 Mr. Robert Curtis  
 Mr. and Mrs. Ed Czarnecki  
 Ms. Arlene M. Czuba  
 Mr. and Mrs. John Dallas  
 Ms. Tina Dalton  
 Ms. Judith Darga  
 Mr. and Mrs. Evtishios Daros  
 Ms. Tracy D'Augustino  
 Ms. Sandra Dault  
 Ms. Caroline Davies  
 Dr. and Mrs. Curtis G. Davis  
 Mr. Jack Davison  
 Mr. and Mrs. Gary Dawley  
 Ms. Bridget Day  
 Mr. Steve Dean  
 Mr. and Mrs. Wellington D. Dean  
 Ms. Mary DeCaire  
 Ms. Audrey Decker  
 Ms. Brianna Decker  
 Mr. Jimmy Decker

Karlin Decker  
 Ms. Marga Decker  
 DeepWoods Taxidermy  
 Mr. David Delano  
 Arthur DeLaval  
 Mr. and Mrs. Frank B. Demaggio  
 Mr. Michael DeMeyere  
 Ms. Sharon DeMeyere  
 Erika Dense  
 Mr. Jim DesRocher  
 Mr. and Mrs. James L. Dessenberg  
 Mr. Jonathon Dessenberg  
 Ms. Ann L. Diamond  
 Mr. John Diamond  
 Mr. Phil Diamond  
 Mr. and Mrs. Marvin E. Dick  
 Ms. Sally E. Dick  
 Mr. and Mrs. Bruce Dietz  
 Ms. Pamela Dietz  
 Jocelyn Dillard  
 Ms. Jennifer Dingman  
 Mr. and Mrs. Gary R. Dipzinski  
 Mr. John Donahue  
 Ms. Jacqueline Donajkowski  
 Ms. Jenna Donajkowski  
 Ms. Nadine K. Donajkowski  
 Dr. Mona Donnelly  
 Mr. Roger Dorr  
 Mr. and Mrs. Bryan Dort  
 Mr. Jere M. Doyle  
 Ms. Laura Dubey  
 Ms. Marsette Dubie  
 Mr. and Mrs. Kenneth R. Dully  
 Ms. Danica L. Dumsch  
 Ms. Susan Duncan  
 Kathleen Dunckel  
 Mrs. Marion S. Dunckel  
 Mr. and Mrs. John P. Eagan  
 Mary Eagan  
 Ms. Michelle Eagling  
 Mr. Ivan Earley  
 Sandy Eastway  
 Rudi D. Edel  
 Ms. Barbara Edison  
 Edward Jones, Chuck Ingle  
 Ms. Susan Edwards  
 Mr. and Mrs. Robert Eller  
 Mr. and Mrs. Charles Elliott  
 Mr. and Mrs. Mark D. Elliott  
 Ms. Michelle R. Erickson  
 Mr. Warne N. Erickson  
 Ms. Abigail P. Ertel  
 Mr. D. Chad Esch  
 Chris Ewing  
 Dr. and Mrs. Timothy H. Eyth  
 Ms. Lorraine M. Failing  
 Ms. Dawn R. Fairchild  
 Mr. and Mrs. Robert Fairchild



Ms. Marsha Fales-Wright  
 Feitler Family Fund  
 Rudy and Donna Feldt  
 Ms. Jillian Ferguson  
 Ms. Julie A. Ferguson  
 Mr. and Mrs. Marc K. Ferguson  
 Ms. Olivia J. Ferguson  
 Mr. and Mrs. John Feys  
 Mr. and Mrs. John Fetzey  
 Mr. Edward Fines  
 Mr. and Mrs. Gary R. Finzel  
 First Congregational Church  
 First Federal Community  
     Foundation  
 First United Methodist  
     Church-Alpena  
 First United Methodist Church  
 Ms. Jacqueline M. Fitzgerald  
 Mr. and Mrs. Timothy Fitzpatrick  
 Mr. Allan M. Fletcher  
 Jim & Ann Florip  
 Ms. Lisa Fluharty  
 Mr. Michael Fochtman  
 Mr. and Mrs. John T. Forssman  
 Ms. Brenda Forsythe  
 Ms. Sandra Fortier  
 Ms. Sandy Jo Fortier  
 Four Season Storage  
 Ms. Barbara Fox  
 Mr. and Mrs. Donald Frank  
 Frankenmuth Insurance  
 Ms. Regina Franklin  
 Ms. Bonita Frantz  
 Ms. Kayli Frantz  
 Wayne and Barbara Frantz  
 Mr. Tom Fraser  
 Ms. Lynne Fredlund  
 Mr. and Mrs. Howard French  
 Ms. Marge (Marjory) French  
 Mr. Michael Freudenmuth  
 Friends of Kameron Sherwood  
 Friends of Thunder Bay National  
     Marine Sanctuary  
 Friends Together  
 Ms. Sharon Fritz  
 Ms. Mary Lou Froggett  
 Ms. Veronica H. Frost  
 Ms. Wendy Fuhr  
 Mr. Al S. Fulford  
 Ms. Kathleen Furtaw  
 Mr. and Mrs. William H. Gaasch  
 Ms. Kendra Gagnier  
 Mr. Stephen C. Gallagher and  
     Mrs. Joanne LaFleche-Gallagher  
 Mr. and Mrs. Richard C. Galloway  
 Ms. Catherine Garant  
 Mr. Joe Garant  
 Mr. Michael J. Garant

Ms. Ronda Gartland  
 Ms. Meaghan Gass  
 Mr. and Mrs. Kenneth Gauthier  
 Mr. and Mrs. Gary A. Gawel  
 Ms. Anne Gentry  
 Ms. Dawn R. Gentry  
 Ms. Nancy L. George  
 Mr. and Mrs. Boris P. Gerber  
 Dr. Jeffery S. Gerow  
 Ms. Christina Getachew  
 Ms. Lisa A. Ghiati Blaski  
 Ms. Shelly K. Gibbons  
 Mr. and Mrs. John F. Gilmet  
 Ms. Janice Giordano  
 Jodi Lynn Adrian Glomski  
 Mr. Justin Gluesing  
 Mr. and Mrs. Paul E. Godi  
 Mr. and Mrs. Phillip M. Goetz  
 Mrs. Joyce Gohlke  
 Mr. and Mrs. Keith Gohlke  
 Mr. Robert J. Going  
 Mr. and Mrs. Robert Golding  
 Dr. and Mrs. Jorge T. Gonzalez  
 Mr. and Mrs. Donald Gooch  
 Ms. Kelli Goodwin  
 Ms. Elizabeth Gorske  
 Ms. Ellen Gould  
 Mr. Paul J. Grabiell  
 Ms. Tammy Graf  
 Ms. Katie Granger  
 Mr. and Mrs. Ben W. Granlund  
 Ms. Theresa Grant  
 Estate of Jacquelyn Granum  
 Mr. and Mrs. Edward S. Gravlind  
 Mr. and Mrs. Jefferson Gray  
 Great Lakes Fishery Trust, Inc.  
 Great Lakes Stewardship  
     Initiative  
 Great North Pet Supply  
 Ms. Lora E. Greene  
 Mr. and Mrs. Thomas E. Greko  
 Mr. Edward Grezlak  
 Mr. and Mrs. Robert Griffin  
 Ms. Karen Grochowski  
 Mr. and Mrs. James Grulke  
 Mr. and Mrs. William W. Haase  
 Habitat for Humanity  
     Northeast Michigan  
 Ms. Vicki A. Habitz  
 Ms. Margie Hale-Manley  
 Beach & Marianne Hall  
 Mrs. Doreen Hall  
 Mr. Edwin Hall  
 Ms. Sharon L. Hall  
 Ms. Nancy Hammond  
 Dr. and Mrs. Brian Hanna  
 Ms. Alayne A. Hansen  
 Mr. Scott D. Hansen

Ms. Vicky Hansen  
 Hantz Real Estate Ventures  
 Mr. Gerald Hardesty  
 Hardies Electric  
 Hardwoods Limited Partnership  
 Mr. Marc P. Haring  
 Dr. and Mrs. Michael K. Harkins  
 Mr. and Mrs. Douglas P. Hart  
 Mrs. Mary L. Hart  
 Mr. and Mrs. Thomas R. Hart  
 Mr. Richard A. Hartford  
 Ms. Cindy R. Hartman  
 Shareef Hasanuddin  
 Ms. Jessica Hatch  
 Mr. Marion Hautea  
 Ms. Jeanette L. Havel  
 Mr. and Mrs. Ronald E. Hayes  
 Ms. Diane Hayka  
 Ms. Ilene F. Hayka  
 Mrs. Audrey Heath  
 Mr. and Mrs. Elbert Heath Jr.  
 Ms. Sarah Hefelee  
 Jay and Peggy Heilman  
 Ms. Theresa A. Heinze  
 Ms. Susan Hensler  
 Ms. Andrea J. Hepburn  
 Mr. and Mrs. Patrick Heraghty  
 Mr. Patrick J. Heraghty  
 Mr. and Mrs. Charles T. Herring  
 Ms. Amber N. Hess  
 Ms. Ruth Hewett  
 Colleen Higgins  
 Ms. Phyllis J. Higman  
 Jann Hija  
 Mr. and Mrs. Thomas P. Hilberg  
 Ms. Jean Hill  
 Hillman United Methodist Church  
 Ms. Kathy Himes  
 Ms. Patricia Hiske  
 Adam Hitch and  
     Christine Bruske-Hitch  
 Ms. Heather Hitt  
 Mr. Charles L. Hoerl  
 Ms. Susan Hoes  
 Mr. and Mrs. Timothy Hoes  
 Deborah Homant  
 Dr. Priscilla Homola  
 Ms. Judy Hoos  
 Mr. and Mrs. Donald V. Horger  
 Ms. Bonnie Horsfield  
 Mrs. Grace M. Hosking  
 Joseph and Jill Houle  
 Ms. Anne S. House  
 Ms. Jean G. Howard  
 HPC Credit Union  
 Hubbard Lake Community  
     Association  
 Hubbard Lake Heating

Hubbard Lake Sportsman & Improvement Assoc.  
 Mr. and Mrs. Kenneth Hubbard  
 Mr. and Mrs. Thomas B. Huck  
 Ms. Patricia Hull  
 Patricia Hummel  
 Ms. Margie Hunt  
 Ms. Susan Hurford  
 Huron Humane Society  
 Huron National Bank  
 Huron Pines, Inc.  
 Mr. and Mrs. Robert M. Hutchins  
 Ms. Grace A. Idalski  
 Ms. Stephanie G. Ihnat  
 Independent Advisor, LLC  
 Mr. and Mrs. Albert R. Ingalls Sr.  
 Mr. and Mrs. Charles R. Ingle  
 Ms. Sue Isaacs  
 Ms. Debra Isel  
 Unni W. Ivesdal  
 M.Y. Jabbari and Mehrmaz Shahriari  
 Ms. Abigail A. Jackson  
 Ms. Gina Jackson  
 Mr. and Mrs. Raymond F. Jackson  
 Patrick and Raleigh Ann Jacques  
 Mr. Douglas Jager  
 Mr. Joe P. James  
 Carey Jansen  
 Ms. Patricia Jarema  
 Mr. Brad Jensen  
 Mr. and Mrs. David W. Jessup  
 Mr. Joel W. Jett  
 Casey Johnson  
 Ms. Cindy Johnson  
 Mr. and Mrs. Eric N. Johnson  
 Mr. and Mrs. James H.L. Johnson  
 Mr. James W. Johnson  
 Ms. Lorraine Johnson  
 Mr. Theodore Johnson  
 Ms. Wendy Johnson  
 Mr. Jeff Johnston  
 Ms. Janelle Jones  
 Ashley E. June  
 Don June  
 Ms. Jennifer Justiniano  
 Ms. Lauren Kadrich  
 Ms. Judith Kalmanek  
 Ms. Karen T. Kamyszek  
 Mrs. DeeAnn R. Karos  
 Mr. Russell Kauffman  
 Ms. Joyce Kazmierski  
 Ms. Kay Kearly  
 Ms. Kendra Kearly  
 Ms. Nancy Kearly  
 Ms. Janice Kell  
 Mr. and Mrs. Barry P. Keller  
 Mr. Wayne L. Keller  
 Ms. Brenda Kelley

Mrs. Diana Kelly  
 Mr. Michael J. Kelly  
 Mrs. Harriett R. Kelm  
 Mr. and Mrs. Robert G. Kemnitz  
 Ms. Samantha Kendziorski  
 Mr. Robert R. Kennedy and  
 Mrs. Margaret A. Kutzera  
 Kenya Real Ministries Inc.  
 Ms. Catherine Kerr  
 Mr. Martin Kerr  
 Ms. Gloria D. Kershaw  
 Ms. Judith K. Kimball  
 Ms. Shelly Kimsel  
 Ms. Jessica King  
 Mr. and Mrs. Terry King  
 Mr. and Mrs. Mark B. Kinney  
 Ms. Brenda M. Kinnunen  
 Leslie Kirchoff  
 Mr. and Mrs. Thomas A. Kish  
 Ms. Heidi Kissane  
 Mr. Edward Klimczak Jr.  
 Ms. Linda B. Kmit  
 MS. Justine W. Knaebe  
 Mr. and Mrs. Donald P. Knechtel  
 J. Knisely-Simons  
 Ms. Michelle Knoch  
 Mr. Herbert C. Knowlton  
 Mr. Daniel Kobil  
 Ms. Jennifer Kolasa  
 Mr. and Mrs. Ken Kolasa  
 Ms. Vivian Koss  
 Ms. Ashlee Kowalksi  
 Ms. Jean Kowalski  
 Hon. and Mrs. John F. Kowalski  
 Ms. Karla Kowalski  
 Ms. Theresa M. Kowalski  
 Mr. and Mrs. Wayne H. Kowalski  
 Mr. and Mrs. Gerald Kraft  
 Ms. Kingsli K. Kraft  
 Ms. Lisa A. Kraft  
 Mr. and Mrs. Alex W. Krajniak  
 Ms. Kimberley Krajniak  
 Ms. Jackie A. Krawczak  
 Ms. Kristen Krawczak  
 Mr. and Mrs. Eric M. Krebs  
 Mr. Kenneth Kreichelt  
 Ms. Francene Krentz  
 Mr. Kenneth R. Kriecheit  
 Krueger's Fish Market  
 Ms. Debra Kruttlin  
 Mr. and Mrs. Monty L. Kruttlin  
 Mr. Ronald M. Krzesniak  
 Ms. Marion E. Kuebler  
 Mr. Timothy M. Kuehnlein Jr.  
 Ms. Arika Kunath  
 Mr. and Mrs. Bruce A. Kundering  
 Mr. Lewis W. Kunze  
 Mr. Carl Kutzli

Mr. Donald La Barre  
 Mr. and Mrs. Dana LaBar  
 Ms. Sharon LaBrecque  
 Ms. Melissa A. Lacombe  
 Mr. and Ms. Gary LaCross  
 Mr. Matthew LaCross  
 Mr. and Mrs. Thomas J. LaCross  
 Mr. and Mrs. Ryan E. Ladley  
 Ms. Michelle LaFave  
 Ms. Joanne LaFleche Gallagher  
 Mr. and Mrs. George LaFleche  
 Genevieve C. LaFleur  
 Mr. and Mrs. Edwin M.  
 LaFramboise  
 Mr. and Mrs. William LaMarre  
 Ms. Maggie Lamb  
 Bernie and Nancy Lamp  
 Mrs. Marion Lamy  
 Ms. Karen Landane  
 Mr. Robert Lang  
 Ms. Geneva Langeland  
 Ms. Karen Lankheet  
 Ms. Judy LaPorte  
 Mr. Andrew Lappan  
 Ms. Mary L. Lappan  
 Mr. Steven A. Lappan  
 Mr. and Mrs. Thomas A. Lappan  
 Mr. Casey Larkin  
 Mr. and Mrs. David Larkin  
 Ms. Lisa M. Larkin  
 Mr. Charles A. Larnard  
 Mr. and Mrs. Allen Larson  
 Ms. Loretta LaTulip  
 Mr. and Mrs. James A. Laugal  
 Mr. and Mrs. Thomas Lavoie  
 Ms. Dee Law  
 Ms. Cathy Lawrence  
 Ms. Joann P. Leal  
 Ms. Ruth Ann LeBarre  
 Ms. Jennifer Lee  
 Ms. Natalie Lee  
 Ms. Janice Lefevre  
 Ms. Cheryl Lemke  
 Mr. and Mrs. Michael Lempinen  
 Ms. Lisa A. Lenard  
 Ms. Lisa S. Lenard  
 Ms. Lori Leow  
 Mr. Paul B. Lerg  
 Mr. Arnold Leriche Jr.  
 Erwin Lewandowski  
 Mr. and Mrs. William D. Lewis  
 Ms. Andrea Liberty  
 Ms. Kirsten D. Lietz  
 Ms. Kelcey Lilley  
 Lincoln Lions Club  
 Ms. Carolyn Lindhorst  
 Mr. and Mrs. Max Lindsay  
 Mr. and Mrs. Lowell B. Lindy

Ms. Mary Linton  
 Mr. Samuel LoPresto  
 Merry L. Loyer  
 Mr. and Mrs. Lee E. Luck  
 Mr. Joseph Lukasiewicz  
 Mrs. Carol E. Lund  
 Ms. Jill K. Lutes  
 Mr. and Mrs. Timothy G. Lutes  
 Ms. Jessica Luther  
 Ms. Eleanor Lutze  
 M. Vincent Scudder Family  
 Mr. and Mrs. Norman Maasshoff  
 Ms. Donna MacAulay  
 Ms. Hannah M. MacDonald  
 Mr. Michael G. Mack  
 Mr. Scott MacKenzie  
 Dr. Donald MacMaster &  
     Dr. Tina Rossi  
 Dr. John C. MacMaster &  
     Dr. Jacqueline M. Fitzgerald  
 Ms. Patricia MacNeill  
 Mr. and Mrs. Calvin J. Maestro  
 Magnaloy Coupling Co.  
 Ms. Karen A. Magness-Eubank  
 Mr. and Mrs. Timothy J. Maher  
 Mr. and Mrs. James Majesky  
 MaKinnon Feed &  
     Western Wear  
 Jan Male  
 Ms. Sandra K. Malloy  
 Ms. Susan E. Malone  
 Ms. Elizabeth Manchester  
 Mr. and Mrs. Paul L. Mancine  
 Mr. and Mrs. Michael P.  
     Mandrick  
 Ms. Brenda Manning  
 Ms. Jennifer Manning  
 Chad Markham  
 Mr. Thomas L. Marr  
 Jesse Marshall  
 Ms. Nancy Marshall  
 Mr. and Mrs. Thomas J. Marshall  
 Ms. Amy Martin  
 Ms. Ann T. Martin  
 Mr. and Mrs. Christopher P.  
     Martin  
 Mr. and Mrs. Robert H. Martinez  
 Mr. and Mrs. William K. Marvin  
 Ms. Betty J. Masters  
 Mr. and Mrs. James Masters  
 Ms. Brittani Mather  
 Ms. Pamela A. Matthews  
 Mr. Michael A. Maturen  
 Mr. and Mrs. August Matuzak  
 Ms. Beth Matzke  
 Mrs. Sue Maxwell  
 Ms. Katherine Maynard  
 mBank

Mr. and Mrs. James L. McCallum  
 Mr. and Mrs. William McClay  
 Mr. Mike McClellan  
 Mr. Matthew McCormack  
 Mr. and Mrs. Christopher B. McCoy  
 Mr. and Mrs. Jack McCoy  
 Ms. Martha A. McDonald  
 Ms. Judy McFalda  
 Mr. Alan McGowen  
 Mr. Dana McGrew  
 Ms. Carol McKay  
 Ms. Denise McKenna  
 Dr. and Mrs. Jon B. McLain  
 Mr. and Mrs. Curtis McLaren  
 Ms. Margaret L. McLellan  
 Mr. and Mrs. Larry T. McLennan  
 Mr. Scott McLennan  
 Ms. Lorna McMahon  
 Mrs. Maureen McNamara  
 Mr. and Mrs. James A. McNeil  
 Ms. Maureen Mead  
 Mr. and Mrs. Michael Meagher  
 Mr. and Mrs. Gary A. Medland  
 Susan Medovsky  
 Mr. and Mrs. Robert Meixell  
 Ms. Sarah Melching  
 Mr. David Melville  
 Mr. and Mrs. George E. Melville  
 Mr. Roger Mendel  
 Mr. Ron Meneghel  
 Mr. and Mrs. Craig A. Mercer  
 Merrill Lynch  
 Ms. Cathy S. Meske  
 Mr. Bruce Michaud  
 MidMichigan Health  
 Mr. and Mrs. Larry R. Miller  
 Mr. and Mrs. Leslie L. Miller  
 Ms. Linda L. Miller  
 Mr. and Mrs. Charles S. Mills  
 Mr. Richard C. Mills  
 Ms. Vanessa Mills  
 Ms. JoAnn Misel  
 Mr. and Mrs. Donald Mitrzyk  
 Mr. and Mrs. AlDean Moe  
 Mr. and Ms. David A. Molstead  
 Ms. Martha A. Moody  
 Mr. and Mrs. Mikel Moors  
 Mr. and Mrs. Timothy S. Moran  
 Mr. and Mrs. William Morford  
 Ms. Kenna J. Morgan  
 Mr. and Mrs. William S. Morgan  
 Mr. Jerome H. Morris  
 Mr. and Mrs. James W. Morrone  
 Mr. James Mortimer  
 Ms. Janelle Mott  
 Ms. Barbara J. Mouthaan  
 Randy A. Mullard and  
     Amy J. Moir

Ms. Jacqueline A. Mullen  
 Mrs. Judith Munroe  
 Mr. and Mrs. Michael G. Munroe  
 Ms. Barbara Murphy  
 Mr. and Mrs. Kenneth L. Murray  
 Mr. and Mrs. Erik S. Nadolsky  
 Ms. Susan J. Nagy  
 National Financial Services LLC  
 Mrs. Anne Nave  
 NE Mich. Coalition for the  
     Prevention of Homelessness  
     & Hunger  
 Ms. Brenda Nedwash  
 Neiman's Family Market  
 Mrs. Joyce C. Nelander  
 Mr. Barry R. Nelson  
 Ms. Nancy B. Nelson  
 Mr. Neil Nelson  
 Mr. and Mrs. Wayne A. Nelson  
 Gordon & Vernie Nethercut  
 Mr. William Nethercut  
 Network for Good  
 Ms. Jennifer L. Newhouse  
 Dr. Donald L. Newport  
 Ms. Judy M. Nichols  
 Ms. Tracy Niedzwiecki  
 Ms. Stacie Nielsen  
 Mr. and Mrs. Douglas L.  
     Niergarth  
 Ms. Margaret Nisbet  
 Northern Eye  
 Northern Health Plan  
 Northland Area Federal  
     Credit Union  
 Ms. Gayle A. Nowak  
 Mr. and Mrs. Bernard J. O'Brien  
 Mr. and Mrs. Daniel J. O'Connor  
 Ms. Diane E. O'Connor  
 Dr. and Mrs. Bruce R. Ohmart  
 Ms. Stephanie Olson  
 Ms. Mary O'Neil  
 Ms. Lisa Orozco  
 Mr. Thomas W. Orth  
 Mr. Eric Ostrander  
 Ms. Kaylyn Ostrander  
 Mr. and Mrs. Thomas C. O'Toole  
 Mr. and Mrs. Ronald Ott  
 Ms. Marilyn A. Overholt  
 Ms. Onalee R. Pallas  
 Mr. Herbert Palmer  
 Ms. Sandra L. Parks  
 Mr. and Mrs. Robert R.  
     Pattengale  
 Ms. Mary K. Patterson  
 Mr. and Mrs. Patrick C. Patterson  
 Mr. Adam D. Pavlik  
 Ms. Mary G. Peterson  
 Mr. Aleck Petrena



Mr. and Mrs. Robert Petrovich  
 Mr. and Mrs. Roger M. Phillips  
 Mr. Philip Pickard  
 Ms. Nicole Pietrangelo  
 Ms. Jessica Pilarski  
 Ms. Frieda Pinkert  
 Mr. and Mrs. Michael Pinskey  
 Ms. Barbara L. Piper  
 Ms. Liz Piper  
 Mr. James Platt  
 Ms. Linda Ploe  
 Mr. and Mrs. Walter C. Plohocky  
 Ms. Carole J. Plunkey  
 Mr. and Mrs. Joseph A. Plunkey  
 Mrs. Harriet Poch  
 Ms. Jennifer Poli  
 Ms. Judith Poli  
 Mr. Thomas Ponder  
 Mr. John Porter  
 Ms. Paula Potvin  
 Mr. and Mrs. Ronald J. Prell  
 Presque Isle District Library  
 Presque Isle Electric & Gas Co-op  
 Presque Isle Township  
 Presque Isle Township Museum  
 Society Inc.  
 Presque Isle Women's Club  
 Mr. and Mrs. Ronald Preston  
 Mr. Alan C. Preuss and  
 Mrs. Elaine E. Manning Preuss  
 Mr. and Mrs. Mike Preuss  
 Ms. Carolyn Price  
 Ms. Dawn Price  
 Ms. Marian Prieur-Bastow  
 Ms. Cherith Prince  
 Mr. Bradley Przeslawski  
 Ms. Carlene Przykucki  
 Dr. and Mrs. Mark W. Puls  
 Ms. Sarah M. Purol  
 Ms. June Pursey  
 Mr. and Mrs. Bill Quakenbush  
 Mrs. Susan Rafferty  
 Francis Rainey  
 Ms. Deborah Rapelje  
 Ms. Kayla Ratz  
 Ms. Shirley Rau  
 Mr. David Read  
 Real Estate One of Alpena  
 Red Barn Trucking, LLC  
 Mr. and Mrs. Glen Reed  
 Mr. Michael Rehling  
 Ms. Janet M. Reins  
 Mr. Doug Repke  
 Dr. Gregg S. Resnick  
 Ms. Kristine Reynolds  
 Ms. Loretta Reynolds  
 Mr. Scott M. Reynolds  
 Lonell Rice

Mr. and Mrs. Gary R. Rich  
 Ms. Annele Richards  
 Rev. and Mrs. C. Jack Richards  
 Mr. Michael Richards  
 Ms. Margaret Ricker  
 Mr. David A. Riegler  
 Ms. Mary A. Riley  
 River Center Committee  
 Ms. Kamila Robillard  
 Mr. and Mrs. Ross Roeder  
 Mr. and Mrs. Bruce C. Rogers  
 Mr. Ronnie Roland  
 Ms. Janet M. Romas  
 Ms. Lorri Rondeau  
 Ms. Carol M. Rose  
 Ms. Hayley Rose  
 Mr. Dan Roshon  
 Rotary Club of Alpena  
 Rotary International District 6310  
 Mr. William E. Roth  
 Mr. and Mrs. Christopher  
 W. Rottiers  
 Mrs. Denise A. Rousseau  
 Ms. Donna Roussin  
 Mr. Peter Roznowski  
 Mr. and Mrs. Steve Ruberg  
 Harold B. Ruder and  
 Ann-Marie Ruder  
 Mr. and Mrs. Donald Rumbles  
 Mr. and Mrs. Khalil M. Saab  
 Ms. Mary Pat Sabourin  
 Mr. Kevin Salsbury  
 Mr. Raymond Samide  
 Mr. Charles Sanborn  
 Ms. Bethany Saunders  
 Mr. and Mrs. Kurt Schaedig  
 Mr. and Mrs. Arnold Schalkofske  
 Mr. and Mrs. Nicholas Schefke  
 Ms. Mary Lou Schepke  
 Ms. Kathryn Schmidt  
 Ms. Marie A. Schmidt  
 Mr. Brandon Schroeder  
 Mr. and Mrs. Scott A. Schropp  
 Dr. and Mrs. Jeffrey C. Schubert  
 Mrs. Christi Schultz  
 Mr. and Mrs. Dennis Schultz  
 Ms. Kimberly Schultz  
 Mrs. Pat Schultz  
 Mr. and Mrs. Philip Schultz  
 Mr. and Mrs. Robert L. Schultz  
 Mr. Steven Schultz  
 Schwab Charitable Fund  
 Ms. Meagan Schwartz  
 Ms. Kathy Seal  
 Ms. Marcie Seelye  
 Ms. Kellie M. Sefernick  
 Ms. Sydney M. Sefernick  
 Ms. Linda Seguin

SEI Private Trust Company  
 Mr. Alan Seiferlein  
 Mr. and Mrs. Jim R. Shaffer  
 Ms. Carol A. Shafto  
 Ms. Janet Sharpe  
 Ms. Geraldine Shea  
 Ms. Kelli Sheehan  
 Ms. Sharon P. Sheldon  
 Ms. Andrea Sheridan  
 Mr. Charles Sherwin  
 Mr. and Mrs. Ronald L.  
 Shoksnnyder  
 Ms. Lillian Shriner  
 Andrea Shull  
 Mr. Jeff Silagy  
 Mr. and Mrs. Carl C. Silver  
 Ms. Elizabeth J. Silver  
 Mr. Joseph Simko  
 Ms. Tonya Simko  
 Marc Simons &  
 Janet Knisely-Simons  
 Ms. Connie S. Sims  
 Ms. Diane L. Sims  
 Mr. and Mrs. Gary G. Sims  
 Ms. Barbara J. Skaluba  
 Mr. and Mrs. Mark L. Skiba  
 Mr. and Mrs. Peter W. Skiba  
 Ms. Stacy Skiba  
 Mr. and Mrs. Timothy A. Skiba  
 Dr. and Mrs. Tony Skiba  
 David and Susan Skibbe  
 Mr. and Mrs. Carl Skwirsk  
 Dr. Elaine Smith  
 Mr. and Mrs. Eric G. Smith  
 Jordan Smith  
 Ms. Kathryn Smith  
 Ms. Melissa Smith  
 Ms. Meredith Smith  
 Ms. Nancy E. Smith  
 Mr. Robert E. Smith  
 Ms. Roberta Smith  
 Ms. Stacey Smith  
 Ms. Mary J. Smitka  
 Ms. Donna Smolinski  
 Mr. Gordon Snow  
 Ms. Jeanne Snow  
 Ms. Alice Snyder  
 Mr. Charles L. Snyder  
 Ms. Christin A. Sobeck  
 Mr. and Mrs. Eugene Sobeck  
 Mr. Thomas J. Sobeck  
 Ms. Anna Soik  
 Mr. and Mrs. Bradley Somers  
 Ms. Lorrie Somers  
 Ms. Jessica Sorensen  
 Ms. Joyce Sorenson  
 Ms. Nena Sork  
 Mr. and Mrs. Don G. Speer

Mr. and Mrs. William B. Speer  
 Mr. and Mrs. Chester Spencer  
 Spruce Presbyterian Church  
 Ms. Diane K. St. George  
 St. Johns Lutheran Church Ladies  
   Aid Society  
 Mr. and Mrs. Robert Stacey  
 Mr. Robert Stafford  
 Mr. Tom Staley  
 Ms. Carrie Standen  
 Mr. and Mrs. Steven H. Stargardt  
 Judith Stark  
 Ms. Angela Stawowy  
 Ms. Kara Steinke  
 Ms. Amelia Stepaniak  
 Ms. Lysie Stepanski  
 Michael Stepanski  
 Mr. Mark Sterling  
 Mr. Charles D. Stevens  
 Mr. and Mrs. Gary P. Stevens  
 Ms. Jennifer Stevens  
 Mr. Matthew Stevens  
 Ms. Sarah B. Stevens  
 Mr. and Mrs. Donald Stewart  
 Ms. Samantha Stewart  
 Dr. and Mrs. Henry Stibitz  
 Mr. and Mrs. Daniel A. Stock  
 Mr. Andrew Stone  
 Ms. Roberta E. Storey  
 Mrs. Muriel E. Straight  
 Mr. and Mrs. Barry Stricker  
 Ms. Molly Stricker  
 Ms. Ellen M. Strobel  
 Ms. Beth Strong  
 Mr. and Mrs. Greg Sundin  
 Ms. Linda Suneson  
 Mr. and Mrs. James A. Supina  
 Mr. Anthony Suszek  
 Debora Suszek  
 Ms. Judy A. Suszek  
 Sweet Heating and Cooling  
 Mr. and Mrs. Michael E. Sweet  
 K Swindlehurst  
 Mr. John Swise  
 Switzer Veterinary Clinic  
 Ms. Jane Sylvester  
 Mr. and Mrs. Thomas K. Sysak  
 Mr. Mark Szczepanik  
 Ms. Barbara A. Szczesniak  
 Ms. Stacy L. Szczukowski  
 Ms. Nancy Szejbach  
 Mr. and Mrs. David J. Szydlowski  
 Ms. Lynn Talaska  
 Ms. Lauren Tallant  
 Ms. Barbara Tanney  
 Andrew Tarkington, DDS  
 Ms. Christine Taylor  
 Teddie & Zelma Odium Trust

Temple Beth El  
 Terrance & Barbara Bebee Trust  
 Ms. Kimberly K. Tessmer  
 Wynne Tezak  
 Ms. Patricia J. Thomas  
 Denise Thompson  
 Mr. and Mrs. James W. Thompson  
 Ms. Pamela Thompson  
 Mr. and Mrs. Larry R. Thomson  
 Thunder Bay Audubon Society  
   Memorial Fund  
 Thunder Bay Island Lighthouse  
   Preservation Society  
 Thunder Bay Theatre  
 Thunder Bay Tree Service  
 Thunderbay River Watershed  
   Council  
 Mrs. Jacquelyn Timm  
 Ms. Sonya Titus  
 Top O' Michigan Insurance  
   Agency, Inc.  
 Ms. Beth Tovey  
 Ms. Laura M. Trahan  
 Ms. Annette Trelfa  
 Mrs. Delilah Tretinik  
 Tri-Star Trust Bank  
 Ms. Julie A. Turske  
 Ms. Jean B. Tymoc  
 U.S. Lighthouse Society  
 United Way of Northeast MI  
 USAA Investment Management  
   Company  
 Mr. and Mrs. David Usher  
 Mr. and Mrs. Thomas  
   VanMassenhove  
 Mr. Anthony Velat  
 Mr. and Mrs. James Vivian II  
 Ms. Emily Vogelgesang  
 Ms. Rose Vogelheim  
 Ms. Elizabeth Vossmer  
 Mr. Andrew Vought  
 Ms. Cherie Wagensomer  
 Ms. Sunday Wagner  
 Mr. Matthew Waligora  
 Mr. Kenneth E. Ward  
 Ms. Debra Wardman  
 Mary Warzecha  
 Jessica Washburn  
 Water Street Wealth  
   Management of Raymond  
   James  
 Mr. and Mrs. Mark E. Watkins  
 Ms. Debra Wcisel-Ellworth  
 Mrs. Gloria Weaver  
 Mr. and Mrs. Bill Wedge  
 Mr. and Mrs. James Weeks  
 Weinkauf Plumbing & Heating  
 Mr. and Mrs. Jerrold R. Weinkauf

Audrey Weis-Maag  
 Ms. Margaret Weiss  
 Mr. and Mrs. Michael E. Wekwert  
 Ms. Edith Welch  
 Mr. and Mrs. Jeffery J. Welch  
 Wells Fargo Community Support  
   Campaign  
 Ms. Tracie Werblow-Granata  
 Corby Werth  
 Mr. and Mrs. Kenneth D. Werth  
 Ms. Melissa Werth  
 Mr. and Mrs. William Western  
 Mr. and Mrs. Steven C. Westrope  
 Ms. Susan Amanda Whaley  
 Mr. and Mrs. Charles A. White  
 Mr. Edward White  
 Ms. Monica White  
 Chuck & Julie Wiesen  
 Ms. Julie A. Wiesen  
 Ms. Denise Wikaryasz  
 Ms. Cailey Wilkinson  
 Mr. and Mrs. George Wilkinson  
 Dr. Richard Willis  
 Ms. Mary B. Wilson  
 Mr. and Mrs. Peter Wilson  
 Mr. and Mrs. Richard Wilson  
 Mr. Steven R. Wilson  
 Mr. Michael Winder  
 Ms. Sarah E. Winder  
 Ms. Stephanie Winslow  
 Mr. and Mrs. Brian Winter  
 Mr. Jeffrey Wirgau  
 Mr. and Mrs. Roger K. Witherbee  
 Ms. Christine Witulski  
 Mr. and Mrs. Larry A. Woiderski  
 Mr. and Mrs. Thomas A. Woizeschke  
 Mr. Matthew J. Wojda  
 Dr. James T. Wolf  
 Mrs. Mary K. Wolf  
 Dr. and Mrs. Carl Woloszyk  
 Wolverine State Credit Union  
 Ms. Janet L. Wood  
 Ms. Sandra Woods  
 Ms. Lee Ann Wooster  
 Ms. Karolyn K. Wooten  
 Mrs. Betty L. Wright  
 Ms. Karen Wright  
 Ms. Vicki Wright  
 Ms. Peggy Yachasz  
 Ms. Deborah A. Yahne  
 Mr. and Mrs. William A. Yaklin  
 Ms. Kimberly Stewart Young  
 Ms. Mary Young  
 Mr. Ronald Young  
 Mr. Jesus Yruegas and Rita Sands  
 Ms. Jill Zaborney  
 Mr. John R. Zachel  
 Ms. Marge Zajkowski

Mr. Michael Zawalski  
 Mr. William A. Zawalski  
 Mr. and Mrs. Gary M. Zechel  
 Mrs. Dolly Zeller  
 Ms. Linda K. Zielinski  
 Mr. Chris Zimmer  
 Ms. Traci Zolnierrek  
 Ms. Robin Zube

## *Honorary Gifts*

Esther Ableidinger  
 Christy Bastow  
 Chris Baumgardner  
 Kristin Berles  
 Janice Boboltz  
 Ann Boucher  
 Barbara Bruske  
 Catholic Human Services  
 Stuart L. Cohn  
 Katy Conklin  
 Joan Crick  
 Leon DeRosia  
 Sue Duncan  
 Marion Dunckel  
 Natalie Francis  
 Scott & Sherri French  
 Genevra Gould Fox  
 Stacie Hartman  
 El & Audrey Heath  
 Pat Hummel  
 Kelli Kearly  
 Sue Keller  
 Tim Kuehnlein  
 Kara Bauer LeMonds  
 Vanessa Mills  
 Nancy Nelson  
 Gordon Nethercut  
 Susan Nielsen  
 Marian Prieur-Bastow  
 Donna Reinke  
 Carolyn Reneaud  
 Richard and Alice Samid  
 Julie Smith-Mandrick  
 Lee Szczesniak  
 Tara  
 Teddy  
 John VanderLinden & Jack Butler  
 Julie Wiesen  
 Wilson Family  
 Katie Wolf

## *Memorial Gifts*

Cliff Anschuetz  
 Wilma Apsey  
 Dr. Edward & Patricia Arscott

Susan Lane Bastow  
 Mary Jane Bauer  
 Terrance & Barb Beebe  
 Bonnie Benghauser  
 Jay L. Blackmore  
 Dave Boisvert  
 Richard Bowen  
 Larry Briley  
 Tom Carroll  
 Barbara Diamond  
 Drew Diamond  
 Mary Doyle  
 Dolores Drath  
 David Dreps  
 Elena & Abigail Dunckel  
 Margot Dorn Dutcher  
 Paul Eitel  
 Al Engelhardt  
 M.E. Finney  
 Marie Roluffs  
 Ralph & Phyllis Gates  
 James Hart  
 David Havelock  
 Brett Arthur Hayes  
 Robert Hayka  
 Grizzly Hitch  
 Robert Hunt  
 Ozzie Johnson  
 Ruth Cecelia Julian  
 Haydn Karos  
 Kathleen Kauffman  
 Jean Keeler  
 Katherine Kelly-Bruss  
 Jennie Kerr  
 Donna King  
 Victoria E. Krawczak  
 Phil & Keith Kruttlin  
 Rosie Kuchnicki  
 David Lee Lounsbery  
 Lila Lovay  
 Brenda Manning  
 Edna Harriet Manning  
 Toby & Fern Masters  
 Steve McDonald  
 Joyce McLain  
 Peter McNamara  
 Wayne Melville  
 Jim Miesen  
 Mike Murch  
 Ruth Nensewitz  
 F.C. O'Dell, M.D.  
 Kay Ogger  
 Heidi Homola Parsons  
 Peter Pettalia  
 Michael Polaski  
 Ada Precour  
 Ronald Reichle

Dr. Joanne Root  
 Richard Sanders  
 Lillian Scheske  
 Paula M. Schimmel  
 Harry C. Schultz  
 Shirley Stineman  
 Taka  
 Julie Tessmer  
 Patricia Thompson  
 Arthur & Donna Towlerlton  
 Doug Wenzel  
 Marilyn Whitscell  
 Judith Yeo



Mr. and Mrs. Fred Alati  
 Ms. Sue A. Alexander  
 Mr. and Mrs. James R. Allen  
 Almo Manifold & Tool Company  
 Mr. Norm Anschuetz  
 Ms. Sharon E. Arndt  
 Mr. and Mrs. Peter Barbier  
 Mr. and Mrs. Dave D. Beardslee  
 Mr. and Mrs. Bruce Bernard  
 Bessey, Inc.  
 Mr. and Mrs. Lindsey Bielby  
 Ms. Lynne A. Bigelow  
 Ms. Ethel L. Blust  
 Mr. and Mrs. Patrick N. Boensch  
 Mr. and Mrs. Terry Bovee  
 Mr. and Mrs. Chad W. Brandt  
 Mr. and Mrs. Richard A. Braun  
 Frankie Breslin  
 Mr. and Mrs. Bill Britt  
 Mr. and Mrs. Dale Bronson  
 Ms. Susanne A. Brzakowski  
 Mr. and Mrs. Todd Buresh  
 Mr. and Mrs. Michael J. Burskey  
 Mr. and Mrs. Steven Casey  
 Mr. and Mrs. Byron Charters  
 Mr. and Mrs. Keith J. Charters  
 Chemical Bank  
 City of East Tawas  
 Ms. Christine Clauson  
 Clearview Car Wash & Lube  
 Mr. and Mrs. David E. Conn  
 Ms. Kathy Currie  
 Mr. Lynn Daniels  
 Dixon & Ryan Corp.  
 Mr. and Mrs. Deane F. Doehring  
 Dovetail Solutions, Inc.  
 Ms. Phyllis E. Druley  
 Dryden Family Foundation



Ms. Susan Duncan  
 Mr. and Mrs. Michael Dutkowski  
 Mr. and Mrs. George R. Eaton  
 Mr. Rusty Eavy  
 Edward Jones  
 Ms. Arlene M. Emke  
 Judge and Mrs. J. Richard Ernst  
 Ms. Julia L. Ernst  
 Mr. and Mrs. William L. Ezo  
 Mr. and Mrs. Bernard D. Fegan  
 Ms. Deanna Fellows  
 Mr. and Mrs. Mark Ferguson  
 Mr. and Mrs. Tom Ferguson  
 Ms. Alice M. Ferns  
 Ms. Pauline M. Ferns  
 Fidelity Charitable Gift Fund  
 Ms. Hannah R. Filipek  
 Ms. Susan G. Freel  
 Mr. and Mrs. Thomas R. Freeman  
 Mr. and Mrs. Dennis R. Fuerst  
 Cary Gillings  
 Mr. and Mrs. Gary L. Gillings  
 Mr. Keith Gillings  
 Kris Gillings  
 Ms. Martha M. Glauner  
 Mr. William C. Goold  
 Martha & Jeff Gottlieb  
 Mr. David L. Goupil  
 Mr. and Mrs. Robert Grabow  
 Mr. and Mrs. Lawrence Grezeszak  
 Mr. Lee L. Haddix  
 Hale Education Foundation  
 Hale Insurance Agency  
 Hon. and Mrs. John D. Hamilton  
 Mr. and Mrs. Keith Hasty  
 Mr. and Mrs. David T. Hernacki  
 Mr. Troy Hicks  
 Ms. Catherine W. Houghton  
 Mr. and Mrs. Carl Huebner  
 Ms. Denise Hurd and  
 Mr. Joe Meyers  
 Huron Community Bank  
 Iosco County Historical Society  
 Mr. Douglas Jager  
 Ms. Helen M. Jennings  
 Mr. and Mrs. Barry Johnson  
 Mr. Dean E. Johnson  
 Mr. and Mrs. Tim Kelley  
 Mr. and Mrs. Dale Killingbeck  
 Kirtland Community College  
 Mr. and Mrs. Jerry W. Koehn  
 Ms. Janet Kohn  
 The Krygloswski Family  
 Mr. John G. Kulhavi  
 Mr. and Mrs. Ryan E. Ladley  
 Mr. and Mrs. William Laidlaw  
 Ms. Glenda L. Laser  
 Mr. and Mrs. Gary LeCureux

Dr. John L. Lesneski D.D.S.  
 Ms. Stephanie Mallak Olson  
 Mr. and Mrs. Christopher  
 P. Martin  
 Mrs. Rachel McCready  
 Mr. Richard D. McLellan  
 Ms. Melissa McNier  
 Ms. Jane C. Meyer  
 MidMichigan Health  
 Mr. and Mrs. Jim Mielke  
 Mr. and Mrs. Clifford C. Miller  
 Jeff & D. Bunny Miller  
 Mr. and Mrs. Neal Miller  
 Mr. and Mrs. Robert W. Mitchell  
 Mooney's Ben Franklin Store  
 National Christian Foundation  
 Houston  
 Network for Good  
 Ms. Viola M. Newvine  
 Ms. Margarete M. Olson  
 Mr. & Mrs. Michael O'Reilly  
 Mr. Elliott N. Otis  
 Ms. Penny L. Parkin  
 Mr. and Mrs. William Parsons  
 Ms. Karen Pavlik-Riley  
 Mr. Steven J. Pawloski  
 Mr. and Mrs. Joseph J. Perrera  
 Mr. and Mrs. Gerald Peters  
 Mrs. Edith Peterson  
 Mr. and Mrs. Robert E. Plummer  
 Mr. and Mrs. Joseph A. Plunkey  
 Mr. and Mrs. Lloyd Prescott  
 Ms. Kay L. Price  
 Mr. and Mrs. LeWayne Provoast  
 Ms. Rhonda Provoast  
 Mr. Larry Prueter  
 Quota International of Iosco  
 County  
 Mrs. Shirley Ranger Webb  
 Mr. and Mrs. Roger C. Rasbury  
 Mr. and Mrs. James D. Redmond  
 Mr. and Mrs. Ricky R. Rockwell  
 Ms. Eva Ruckle  
 Mr. and Mrs. Russell V. Sageman  
 Ms. Arlene L. Salisbury  
 Santa Clarita Studios  
 Mr. and Mrs. Richard Schwartz  
 Mr. and Mrs. Richard D. Secord  
 Mr. and Mrs. Ronald L. Shoksnyder  
 Shoreline Players  
 Ms. Kathleen A. Smart  
 Mr. and Mrs. Gaylord N. Smith  
 Mr. and Mrs. Vern Smith  
 Ms. Janet Smith-Flaherty  
 Mr. and Mrs. Donald R. Sokol  
 Mr. and Ms. Raymond St. John  
 Mr. and Mrs. Alan J. Stephenson  
 Mr. and Mrs. Daniel A. Stock

Ms. Joan Stone  
 Mr. and Mrs. Douglas L. Storrs  
 Straits Corporation  
 Mr. and Mrs. Jarold I. Stuber  
 Mr. and Mrs. David J. Sturtevant  
 Mr. Richard E. Swanson  
 Mr. and Mrs. Dale A. Swenson  
 Mrs. Janet A. Swenson  
 Mr. and Mrs. Duane R. Szymanski  
 Tawas Do-it Best Hardware  
 & Lumber  
 Tawas United Fund  
 Mr. and Mrs. Donald Thomas  
 Mr. and Mrs. John A. Thomas  
 Tri-County Agency  
 Mr. and Mrs. Jerry L. Tuma  
 United States Gypsum  
 Foundation-Alabaster  
 Employees  
 Mr. Anthony Urbanski  
 Van Etten Lake Association  
 Ms. Julie VanTol  
 Mr. and Mrs. Patrick W. Voelker  
 Mr. and Mrs. Mike Walker  
 Ms. Renee B. Webster  
 Mr. Ryan T. Webster  
 Ms. Jane Weisbrodt  
 Mr. and Mrs. Robert E. Werth  
 Mr. Benjamin A. Witkopp  
 Ms. Billie L. Wright  
 Mr. and Mrs. Alan McGowen  
 Mr. Dana McGrew  
 Mr. and Mrs. Michael Meagher  
 Mr. James Mortimer  
 Ms. Marilyn A. Overholt  
 Ms. Carole J. Plunkey  
 Mr. Thomas Ponder  
 Ms. June Pursey  
 Francis Rainey  
 Ms. Mary A. Riley  
 Mr. William E. Roth  
 Mr. Alan Seiferlein  
 Ms. Sharon P. Sheldon  
 Mr. Joseph Simko  
 Ms. Tonya Simko  
 Ms. Roberta Smith  
 Ms. Diane K. St. George  
 Mr. Tom Staley  
 Judith Stark  
 Mr. Mark Sterling  
 K Swindlehurst  
 Mary Warzecha  
 Mr. and Mrs. William Western  
 Mr. Ronald Young  
 Mr. Chris Zimmer

## Honorary Gifts

Erin Jill Blakely  
Donald J. Brandt  
Tyler Braun  
Troy & Cheryl Bronson  
Mark & Susan Elliott  
Nancy Huck  
Carl "Auggie" & Sandy Lange  
Frederick Lasure  
Tom, Troy, Kristen, Matthew  
Mitchel  
Ann M. & Robert W. Pawloski  
Swanson Family

## Memorial Gifts

Mary Anschuetz  
Kelly Baumann  
Diane J. Britt  
Anthony (Bo) Chmura  
Donald Dahne  
Coralie Dorcey Earl  
Richard Dorcey  
George Druley  
Bob Emke  
Janice Erickson VanDrese  
Larry Fellows  
Charles R. Fuerst  
Lois Fuerst  
William Fuerst  
Thelma (Eldred) Goold  
Helen Grabner  
Rudy Grabner  
Donna (Charters) Haddix  
Dr. & Mrs. Earl A. Hasty  
Todd Jordan  
Tom Keuper  
Allen E. Kohn  
William Leonard  
Bill Milliron  
Hilda Moelter  
Kenneth J. Myles  
Basil O'Dell  
John O'Farrell Sr.  
Art Parkin  
Karl A. Peterson  
Cliff & Ken St. John  
Ronald Smart  
Diana Smith  
Scott Smith  
Vern Smith Jr.  
Verna Snyder  
Sue Stuber  
Jim & Helen Sturtevant  
David Swenson  
Alice Thompson  
Frederick L. Wallace  
Al Widings Sr.



Mrs. Carolyn Abbs Rice  
Mr. and Mrs. Ronald G. Abraham  
Anglers of the AuSable  
Anonymous  
AuSable River Property Owners  
Association  
AuSable Valley Animal Shelter  
Mr. and Mrs. Bernard E. Bak  
Ms. Judith Barnes  
Mr. and Mrs. Larry Bellor  
Mr. and Mrs. Frank S. Benson III  
Blamer Financial Services, Inc.  
Mr. and Mrs. Terrence H.  
Bloomquist  
Mr. and Mrs. Charles R. Bolda  
Ms. Carol Ann Bostwick  
Mr. and Mrs. George F. Bray  
Mr. and Mrs. Robert A. Brewer  
Ms. Wendy C. Brown  
Mr. and Mrs. Don Bryon  
Mr. and Mrs. Edward J. Buhlman  
Mr. and Mrs. Hugo L. Burzlaff  
Mr. and Mrs. Harvey K. Carden  
Mrs. Betty Lou Carscallen  
Drs. Chris and Mary Chrysler  
Mr. and Mrs. Thomas C. Clapham  
Class of 1968  
Mr. Richard K. Coates  
The Columbus Foundation  
Mr. and Mrs. Douglas C. Cooper  
Mr. and Mrs. Daniel D.  
Courtemanche  
Mr. and Mrs. Jack C. Crandall  
Crawford AuSable Excellence in  
Education Foundation  
Mr. and Mrs. Raymond L. Daniels  
Mr. Florent David  
Justice and Mrs. Alton T. Davis  
Ms. Linda Delemeester  
Dr. and Mrs. Frank N. Derr  
Mr. and Mrs. David J. Drabek  
Ms. Sara Eden  
Educational Support Partnership  
Foundation  
Mr. and Mrs. Michael F. Ehinger  
Dr. and Mrs. Timothy H. Eyth  
Fairview Area Schools  
Fairview Hardware, Inc.  
Ms. Ila M. Fegan  
Mr. and Mrs. Robert P. Finn  
First Round Pick, LLC  
Ms. Daphne Fritz  
Ms. Sharon Fritz

Glenn Frundel and  
Kathryn Root-Frundel  
Ms. Ruth A. Funsch  
Ms. Dianne Gavitt  
Ms. Sandra Golden  
Ms. Geneva Gould Fox  
Mrs. Debra Graham  
Grayling Township  
Mr. and Mrs. Daniel H. Grenier  
Griffin Beverage Company  
Mr. and Mrs. Robert Griffin  
Ms. Caroline R. Ham  
Mr. Robert Hegel  
Mr. and Mrs. Edward N. Henig  
Mr. and Mrs. Gary D. Hughey  
Mr. and Mrs. Kenneth C. Hughey  
Mr. Eugene Hutchins  
Ms. Katherine A. Hutchins  
Mr. and Mrs. Robert M. Hutchins  
Mr. and Mrs. Gerald A. Illig  
Mr. and Mrs. Joseph Izworski III  
Ms. Marilyn L. Jacob  
Mr. Doug J. Jameson  
Mr. and Mrs. Jim J. Janisch  
Mr. Richard Jaskowski  
Ms. Helen M. Jennings  
Mr. and Mrs. Michael L. Joyce  
Ms. Sally A. Kartes  
Mrs. Carol Kerby  
Mr. and Mrs. Roger L. Kessler  
Kirtland Community College  
Mr. and Mrs. Thomas A. Kish  
Kiwanis Club of West Branch  
Mrs. Patricia Kline  
Ms. Darlene M. Knight  
Ms. Katharine A. Kohr  
Mr. and Mrs. Charles Latreille  
Ms. Pamela R. Lavere  
Mr. Donald T. Leslie  
Mason Griffith Founders  
Chapter-Trout Unlimited  
Mr. and Mrs. Tom W. McCauley  
Mr. and Mrs. Robert A. McGrail Jr.  
Mercantile Bank of Michigan  
Mr. and Mrs. Dennis M. Meyers  
MidMichigan Health  
Ms. Jean L. Minkin  
Mio AuSable Schools  
Mio Lions Club  
Mr. and Mrs. Richard C. Moore  
Ms. Harriet Moss  
Mr. Kenneth Motyka  
Ms. Susan Mounts Smith  
Mrs. Joyce C. Nelander  
Ms. Jan K. Nelson  
Mr. and Mrs. Richard L. Nelson  
Mr. and Mrs. Neil Neuhaus  
Mr. and Mrs. Robert L. Nicolini

The Nightmare, Inc.  
 Mr. and Mrs. Douglas Norton  
 Optimist Club of West Branch  
 Orioles Forever Advisory  
 Committee  
 Mrs. Grace M. Orr  
 Ms. Evelyn M. Pauley  
 Ms. Leah R. Pauley  
 Mr. and Mrs. Thomas J. Pavelek  
 Mr. and Mrs. Gerald Peters  
 Mr. Walter J. Petersen  
 Mrs. Susan Porter  
 Mr. and Mrs. John J. Pregler  
 Mr. and Mrs. Michael Pugh  
 Ms. Loree Richardson Noel  
 Mr. and Mrs. Joseph W. Rieger  
 Mr. Jeffrey L. Rivard  
 Roscommon County United Way  
 Rose Tool & Die  
 Ms. Mary Ellen Sappington Good  
 Mr. and Mrs. Walter B. Sappington  
 Mr. and Mrs. Donald Schanz  
 Mr. and Mrs. Ronald G. Schneider  
 Dr. and Mrs. Jeffrey C. Schubert  
 Mr. and Mrs. Philip H. Shaw  
 Ms. Nancy Sheick-Burt  
 Ms. Evlyne H. Sheltrown  
 Ms. Brenda Simmons  
 Ms. Jeanine A. Smith  
 Mr. and Mrs. Frank Smutek  
 Mr. and Mrs. Jay W. Spaulding  
 Mr. and Mrs. Ron Stange  
 Mr. and Mrs. William W. Steelman  
 Steuernol & McLaren Funeral  
 Homes, Inc.  
 Mrs. Muriel E. Straight  
 Summers Dealer Services, Inc.  
 Mr. and Mrs. James A. Supina  
 Mr. and Mrs. Peter L. Swartz  
 Linda Synder-Thurlow  
 Mr. and Mrs. Richard E. Taylor  
 Mr. and Mrs. Robert L. VanSickle  
 Ms. Jennifer Vogelsson  
 Mr. and Mrs. Melvin F. Walker  
 Ms. Patricia A. Ward  
 West Branch Business &  
 Professional Women  
 Weinlander Fitzhugh  
 West Branch - Rose City Schools  
 Whaley Steel Corporation  
 Mr. Charles M. White  
 Mr. and Mrs. George Wilkinson  
 Mr. and Mrs. Larry G. Winslow  
 Mr. and Mrs. William Winslow  
 Ms. Patsy Wiseman-Snider  
 Ms. Carrie Zettel  
 Mr. and Mrs. Todd J. Zettel

## *Honorary Gifts*

1960-61 Varsity Basketball Team  
 Class of 1958  
 Roger Kessler  
 Orioles Forever  
 Elizabeth Salomone  
 Ron and Penny Smith

## *Memorial Gifts*

William & Ellen Andersen  
 Angela Sheick Arnold  
 Dean Atherton  
 Terry Blum  
 Crystal Bohlinger  
 Dr. G. William Bray  
 Arnold Brewer  
 Ann Molloy Byron  
 Vern Clemens  
 Ken Coates  
 Florent "Butch" David  
 Deceased 1968 classmates  
 Marjorie Hasty Fletcher  
 Craig Funsch  
 Doris Cool Gildner  
 Philip Golden  
 Alvin Good  
 George Good  
 JeLima Gustafson  
 James W. Hasty  
 Sherwood Hutchins  
 Joseph & Loretta Izowski  
 Loretta Izowski  
 Judy Lebzeiter Jameson  
 William P. Jennings Jr.  
 Reid Jones  
 Ray Kartes  
 Alta Rabidue McNeal  
 Conrad Meir  
 Donald Miner  
 Helen Ann Molley  
 Bobby Moore  
 Phyllis Hall Morris  
 Hildred L. Moss  
 Alan Murray  
 Bill Muzik  
 Sharon Neubecker  
 Jim T. Orr  
 Richard Pauley  
 Joe Porter  
 Carolyn Hieronymus Rau  
 Karen Crecine Reed  
 Kathryn Ritchey Fritz  
 Peggy Swanick Schneider  
 Gary D. Scott  
 Milford Scott  
 Arlene Sheick Smith

Carol Sheick Schumack Ker  
 Sharon Sheick Bunting  
 Ed Shiel  
 Mollie Simmons  
 Janet Jackson Sowmick  
 Janie & Duke Sterling  
 Alice Thompson  
 Susan Thompson Conyer  
 Judy Thompson  
 Lee H. Ward  
 William "Bill" Winslow  
 Dennis Woughter  
 Glenn & Vera Yoder  
 Connie Zettel  
 Gene & Barb Zettel  
 Terry Zettel



Alice's Kandy & Korn  
 Alliance Beverage Distributing LLC  
 AM First Foundation  
 American Legion Post 159  
 Organization  
 Ms. Mary L. Anderson  
 Mr. and Mrs. William A. Andrew  
 Mr. and Mrs. Marty Andrews  
 Mr. and Mrs. Arthur M. Archambo  
 Audie's Restaurant  
 Axiom Services, Inc.  
 Mr. and Mrs. Roger K. Baer  
 Mr. Lawrence A. Barnes  
 BC Pizza of Mackinaw City  
 Mr. and Mrs. Gregory W. Bedson  
 Mr. James Beebe  
 Ms. Beth A. Benson  
 Ms. Jill Berquist  
 Ms. Beth A. Beson  
 Big G's Lawn Care  
 Big Stone Bay Fishery, Inc.  
 Mr. and Mrs. Edward J. Bilinkas  
 Mr. Richard P. Binder Jr.  
 Bishop GMC Cadillac  
 Mr. and Mrs. David S. Bishop  
 Mr. and Mrs. Clifford H. Bloom  
 Mr. and Mrs. Daniel G. Blundy  
 Mr. Brian M. Boals  
 Ms. Dawn M. Bodnar  
 Mr. and Mrs. Jeff Bowman  
 Ms. Kristin Brookhouse  
 Joe & Kathy Bruce  
 Mr. and Mrs. George T. Buechle  
 Dr. and Ms. Timothy M. Burg  
 Mr. and Mrs. J.A. Burke



Burt Lake Marina, Inc.  
 Calcite Credit Union  
 Mr. and Mrs. Michael Campbell  
 Mr. and Mrs. Richard Card  
 Mr. Henry L. Caulkins  
 Mr. and Mrs. Tom Chastain  
 Cheboygan Kiwanis Club  
 Foundation  
 Childs Consulting Associates, Inc.  
 Mr. and Mrs. John W. Childs  
 Mr. and Mrs. Morey J. Church  
 Citizens National Bank  
 Ms. Susan C. Collins  
 Mr. Jeff Comps  
 Ms. Kristine Cooley  
 Mr. and Mrs. James S. Courage  
 Mr. and Mrs. William C. Courliss  
 Mr. and Mrs. John F. Daily  
 Darrow Bros. Excavating  
 Ms. Katie Darrow  
 Darrow's Family Restaurant  
 Mr. and Mrs. Gregory Dedes  
 Mr. and Mrs. Richard DeVore  
 Dismang Insurance Agency, LLC  
 Ms. Norma J. Dohr  
 Mr. and Mrs. Kenneth E. Doud Jr.  
 Mr. and Mrs. Stephen L. Doughty  
 Ms. Terry Douglas  
 Dr. Elmers Hearing Clinic  
 Mr. and Mrs. Robert Durham  
 Mr. and Mrs. Ronald L. Dye  
 Ms. Mary Elsea  
 Encore Financial Group  
 Mr. John Engel  
 Ms. Mary Erickson  
 Mr. and Mrs. Dennis R. Fernelius  
 Mr. and Mrs. Thomas J. Fisher Jr.  
 Mr. and Mrs. Michael Foley  
 Fort Fudge Shop, Inc.  
 Ms. Connie Gask  
 Mrs. Marjorie Gask  
 Mr. Scott Gasparich  
 GDIV Inc.  
 H. Earl Hoover Foundation  
 Mr. and Mrs. John C. Harris  
 Ms. Sandy Healy  
 Mr. Robert R. Heilman  
 The Hiar Family  
 Mr. Paul B. Hillier  
 Hingston Enterprises, Inc.  
 Mrs. Andrea L. Holmes  
 Mr. and Mrs. William B. Holmes  
 Mr. and Mrs. Charles Holmquist  
 Mr. and Mrs. Gary Holstein  
 Ms. Ann B. Horn  
 Hunt's Mackinaw Pastie Shop  
 Indian River Family Dentistry  
 Integrated Designs, Inc.

Mr. and Mrs. William H. Jacobs  
 Mr. and Mrs. Christopher P. Jaggi  
 Mr. and Mrs. Edgar Jaggi  
 Ms. Katherine Jaggi  
 Dr. and Mrs. Mike Jaggi  
 Ms. Shirley R. Jahn  
 JoAnn's Fudge  
 Mr. Scott Johnson  
 Ms. Marilyn Kapp Moran  
 Ms. Anne Kennedy  
 Ken's Village Market Inc.  
 Mr. and Mrs. Frank D. Kern  
 Mr. and Mrs. Kevin Kinney  
 Mr. and Mrs. Dave Kirkpatrick  
 Mr. Phil A. Kluczynski  
 Mr. Peter Koszut  
 KP Neuman & Sons Construction  
 Mr. Robert A. Kramer  
 Mr. and Mrs. Richards S. Kristin  
 Krueger's Fish Market  
 Mr. and Mrs. Joseph C. Kusiak  
 Jon LaBossiere and  
 Ellen Weatherbee  
 Mr. and Mrs. Richard Lampi  
 Mr. and Mrs. Ty LaPrairie  
 Ms. Joann P. Leal  
 The Leather Exchange Co.  
 Dr. Loretta M. Leja  
 Mr. and Mrs. Todd Lekander  
 Mrs. Elizabeth Limberg  
 Link Engineering Company  
 Lions Club of Mackinaw City  
 Mr. John Little and  
 Ms. Annette Beatty  
 Francis Longuski  
 Mr. and Mrs. Andrew Lucas  
 Mackinac Birkenstock  
 Mackinaw Area Visitors Bureau  
 Mackinaw City Chamber  
 of Commerce, Inc.  
 Mackinaw City Area Arts Council  
 Mackinaw Woman's Club, Inc.  
 Mr. and Mrs. Michael C. Madden  
 Mr. and Mrs. Chuck Maki  
 Mr. and Mrs. Mark Makowski  
 Mr. Chip A. Mars  
 Mr. and Mrs. William K. Marvin  
 Mr. and Mrs. Glen E. Matthews  
 Matt's Plumbing  
 Mr. and Mrs. Gene E. Maybank  
 Mr. and Mrs. John S. Maynard  
 Mr. Ethan McAfee  
 Mr. Russell B. McAfee  
 Mr. and Mrs. Richard L. McCandless  
 Mr. and Mrs. Kevin McCormack  
 Ms. Susan McCoy  
 Mr. and Mrs. Ronald G. McCreedy  
 Mr. and Mrs. James L. McLaren

Ms. Lorna McMahon  
 Ms. Michelle McNulty  
 Mr. Paul Michalak  
 Mr. and Mrs. James M. Middaugh  
 Mr. and Mrs. John G. Miles  
 Mr. and Mrs. Carl M. Miller  
 Mr. and Mrs. Patrick F. Monette  
 Mr. and Mrs. Joel D. Monson  
 Ms. Mary Ann Moore  
 Ms. Janice M. Morrison  
 Mr. and Mrs. Michael P. Mosher  
 Ms. Kristina C. Moutrie  
 Mr. Lucius J. Munger  
 Mr. and Mrs. Al Nagy  
 Ms. Joyce R. Nelson  
 Mr. and Mrs. Gary A. Nordberg  
 Northwestern Mutual  
 Investment Services  
 Ms. Marialana K. Nygard  
 Odawda Casino Resort Petoskey  
 - Mackinaw City  
 James & Alice Padilla  
 Ms. Kathleen Paquet  
 Mr. and Mrs. Jeffrey Parent  
 Mr. and Mrs. Mike Passino  
 Mr. and Mrs. Michael Peccon  
 Mr. and Mrs. Richard R. Perlick  
 Mr. and Mrs. Eugene R. Pezon  
 Mr. Thomas Pfeiffelmann  
 Mr. and Mrs. Darryl A. Pfister  
 Mr. and Mrs. William G. Pierson  
 Pizza Palace  
 Plaunt Transportation, Inc.  
 Mr. Curtis L. Plaunt  
 Ms. Judith A. Plecas  
 Mr. Albert F. Polk  
 Mr. and Mrs. Edward K. Pregitzer  
 R.C. Hendrick & Son, Inc.  
 Mr. Michael O. Ranney  
 RBC Wealth Management  
 Mr. Thomas Redman  
 Mr. and Mrs. Mark C. Rehffuss  
 Mr. and Mrs. Edwin G. Remaly  
 Mrs. Ressler  
 Mr. and Mrs. Michael E. Ridley  
 Mr. and Mrs. Earl D. Rorick Jr.  
 Mr. and Mrs. Raymond Roth  
 Dr. Bradford Rowe DDS  
 Ms. Phyllis Runyan  
 Mr. and Mrs. David L. Sabuda  
 Ms. Jean Saltzman  
 Mr. John V. Sanborn and  
 Mrs. Suzette Cooley-Sanborn  
 Mr. Dean A. Schafer  
 Mr. and Mrs. John H. Schams  
 Mr. Randolph B. Schiffer  
 Mr. Robert H. Schirmer  
 Mr. and Mrs. Stephen Sheridan

Ms. Kathleen D. Simmons  
 Mr. and Mrs. W. Wesley Simpson  
 Mr. and Mrs. Roy H. Sjoberg Jr.  
 Mr. and Mrs. David S. Smith  
 Mr. and Mrs. Bengt Soderqvist  
 Ms. Jane C. Sperry  
 Stafford's Hospitality, Inc.  
 Mr. and Mrs. Gregory L. Stanley  
 Stanley's Variety, Inc.  
 Ms. Patricia A. Stanton  
 Mr. and Mrs. Fred Stone  
 Straits Area Federal Credit Union  
 Ms. Rhea Mary Sullivan  
 Mr. and Mrs. Robert M. Supernault  
 Tee Pee Campground  
 Mr. and Mrs. Thomas A. Teel  
 Teysen's Gifts, Inc.  
 The Keyhole  
 Mr. and Mrs. Bradley S. Thomas  
 Thrivent Financial  
 Tim & Libby Ash Family  
 Foundation  
 Mr. and Mrs. John W. Tysse  
 Mr. and Mrs. Eugene Uhrynowski  
 Valot's Citgo  
 Mr. and Mrs. Bruce K. Vickey  
 Vindel Motel  
 Mr. and Mrs. James R. Vosper  
 Ms. Julia E. Vosper  
 Wawatam Area Senior Citizens, Inc.  
 Mr. and Mrs. Jervis H. Webb  
 Ms. Janet Weber  
 Mr. and Mrs. Joseph Weber  
 Mr. R. Stuart Weisgerber  
 Mr. and Mrs. Philip R. Welch  
 Ms. Juanita R. Westcott  
 Mr. and Mrs. Edward White  
 Mr. and Mrs. Michael J. White  
 Mr. and Mrs. Ronald L. Whitener  
 Mr. Benn E. Williams  
 Mrs. Gussie Williams  
 Mr. and Mrs. John A. Willoughby  
 Mr. and Mrs. Douglas Wohlberg  
 Mr. and Mrs. David W. Wolski  
 Mr. and Mrs. Philip Woollcott Jr.

### *Honorary Gifts*

Bob Arthur  
 John and Mildred Bible  
 Mick Caulkins  
 Jim Clements  
 Lu Munger  
 Scott Simpson  
 Marjorie Weisgerber

### *Memorial Gifts*

Captain John H. Bruce USCG  
 Jim Bryce  
 James Bryce  
 Bryan Charles Card  
 Wilma Cederholm  
 Mr. & Mrs. Stewart M. Cram  
 Bill Elsea  
 Mark R. Fischer Jr.  
 Sam Fralick  
 William R. Gask  
 Timothy Gask  
 Miriam Hoover  
 Judge Carl L. Horn  
 John Kidder  
 Paul Landschulz  
 Kathleen Longuski  
 Virginia McAfee  
 Kevin McCormack  
 Christine Michalak  
 Glen & Flora Miller  
 Dave & Ruth Morse  
 Lucius R. Munger  
 Raymond & Patricia Plaunt  
 Peggy Reeve  
 Ernie Saltzman Jr.  
 Keith Schneider  
 Ed Socolovitch  
 Warren VanDerbeck  
 Janette Whipple  
 Tom Williams  
 Gary Williams  
 Mickey Woiderski

**HOME**  
 Rockport State Park,  
 Alpena County



# 2018 Grantees

Grants made during the 2018 fiscal year - October 1, 2017 - September 30, 2018



Alcona Citizens for Health, Inc.  
Alcona Community Schools  
Alcona Humane Society  
Alcona St. Vincent DePaul  
All Saints Catholic School  
Alma College  
Alpena Area Senior Citizens Council, Inc.  
Alpena Blues Coalition  
Alpena Boosters  
Alpena City Band  
Alpena Community College  
Alpena Community College Foundation  
Alpena County  
Alpena County Library  
Alpena Figure Skating Club  
Alpena Gymnastics, Inc.  
Alpena Hockey Association  
Alpena Huron Shores Babe Ruth  
Alpena Public Schools  
Alpena Street Performers, Inc.  
Alpena Village  
Alpena Volunteer Center  
AMA Educational Service District  
Appalachian Bible College  
Aquinas College  
Association of Lifelong Learners  
Atlanta Church of Christ  
Atlanta Community Schools  
Atlanta Congregational Church/Baby Basket  
Atlanta Full Gospel Assembly of God  
Au Gres-Sims Schools  
AuSable Valley Audubon Society  
Baker College  
Bay View Center  
Besser Elementary School  
Besser Museum for Northeast MI  
Blue Line Club  
Boy Scouts of America Michigan Crossroads Council  
Boys and Girls Club of Alpena  
Calvary Episcopal Church  
Case Township  
Catholic Human Services, Inc.  
Central Michigan University  
Central New Mexico Community College  
Cheboygan Area Schools  
Cheboygan Hockey Association  
Cheboygan Middle School  
Child & Family Services of NE MI  
Children's Advocacy Center of NE MI  
City of Alpena  
Community Support Distribution Services  
Concordia University  
Crawford County Commission on Aging  
Crawford County Community Christian HELP Center  
Dartmouth College  
Department of Human Services

District Health Dept. #4  
Eastern Michigan University  
Emanuel Evangelical Lutheran Church  
Exchange Club of Alpena  
Faith Outreach, Inc.  
Ferris State University  
First Congregational Church  
First United Methodist Church - Alpena  
Food Bank of Eastern Michigan  
Forty Mile Point Lighthouse Society  
Foster Closet of Michigan  
Friends of Negwegon State Park  
Friends of Plaza Pool  
Friends of the Lewiston  
Friends of Thunder Bay National Marine Sanctuary  
Friends Together  
Girl Scouts of Michigan Shore to Shore  
Girls on the Run Sunrise Side  
Grace Lutheran Church  
Grand Lake Community Chapel  
Grand Lake Sportsmen's Club  
Grand Valley State University  
Grayling High School  
Great Lakes Lore, Inc.  
Great Lakes Stewardship Initiative  
H2O Helping 2 Overcome  
Habitat for Humanity Northeast MI  
Harbor Lights Pregnancy and Information Center  
Headwaters Land Conservancy  
Heritage Coast Sailing and Rowing  
Hillman Area Senior Citizens, Inc.  
Hillman Community Radio  
Hillman Community Schools  
Hillman United Methodist Church  
Hospice of Helping Hands  
Hospice of Michigan  
Hospice of Michigan - Alpena  
Hospital Hospitality House of Saginaw  
Huron Humane Society  
Huron Pines, Inc.  
Immanuel Lutheran Church & School  
Indiana Wesleyan University  
Inland Lakes Schools  
Inspiration Alpena  
Iosco County Coats for Kids  
Iosco County Youth Advisory Council  
Iosco Exploration Trail  
Iosco Regional Educational Service Agency  
Junior Achievement of North Central Michigan  
Lake Superior State University  
Life Choices Resource Center  
Mackinaw City Area Arts Council  
McLaren Northern MI Foundation  
Metz Township  
Michigan Center for Construction Education & Research  
Michigan State University  
Michigan Technological University  
Mid-Michigan College  
MidMichigan Health Center - Alpena  
Mikado Township  
MSU Extension - Sea Grant Program  
MSU Extension-Alcona County  
Multi-Purpose Arena Coalition  
NEMROC, Inc.

Northeast Michigan Center for Fine Arts  
Northeast Michigan Community Mental Health  
Northeast Michigan Community Partnership  
Northeast Michigan Community Service Agency  
Northeast Michigan Tnr Inc.  
Northern Lights Arena  
Northern Michigan University  
Northwood University  
Oakland University  
Ogemaw County Genealogical and Historical Society  
Olivet College  
Onaway Area Comm. Schools  
Oscoda Area Schools  
Pine River Van Etten Lake Watershed Coalition  
Posen Area Fire and Rescue  
Posen Consolidated Schools  
Presque Isle Conservation District  
Presque Isle Council on Aging  
Presque Isle County  
Presque Isle County Historical Museum  
Presque Isle District Library  
RedSky Raptor Center  
Ripon College  
River Center Committee  
River House, Inc.  
Rogers City Area Seniors, Inc.  
Ronald McDonald House of Western Michigan  
Rotary Club of Alpena  
Saginaw Valley State University  
Salvation Army of Alpena  
Shelter, Inc./ Hope Shores Alliance  
St. Bernard Friendship Room  
St. Dominic Catholic Church  
St. Ignatius School  
St. Paul Evangelical Lutheran Church Alpena  
Straits Area Youth Advisory Council  
Sunrise Mission, Inc.  
Sunrise Side Lifelong Learning  
Susan Lane Foundation  
Taking Pride in Alpena  
Target Alpena 2000 Corporation  
Taylor University  
Temple Beth El  
Thunder Bay Arts Council  
Thunder Bay Community Health Services, Inc.  
Thunder Bay Folk Society, Inc.  
Thunder Bay Island Lighthouse Preservation Society  
Thunder Bay River Center, Inc.  
Thunder Bay Theatre  
Thunder Bay Trails Association  
Thunder Bay Transportation Authority  
Top of Michigan Trails Council  
Trinity Episcopal Church  
United Way of Northeast MI  
University of Michigan  
Vanderbilt Area School



Village of Hillman  
Village of Lincoln  
Wayne State University Law School  
Westminster Presbyterian Church  
Wilson School  
Wolverine Community Schools



Alpena Community College  
AuSable Valley Audubon Society  
Blue Lake Fine Arts Camp  
Central Michigan University  
Chosen Vision  
College of Creative Studies  
Delta College  
Develop Iosco  
Eastern National Forest Interpretive Association  
Ferris State University  
Girls on the Run  
Good News Ministries Lutheran Church  
Grand Valley State University  
Hale Area Schools  
Hale United Methodist Church  
Harbor Lights Pregnancy and Information Center  
Holy Family School  
Iosco Conservation District  
Iosco County Agricultural Society  
Iosco County Coats for Kids  
Lake Louise United Methodist Camp  
Lansing Community College  
Michigan State University  
Mikado Township  
Northern Michigan Children's Assessment Center  
Northwood University  
Oakland University  
Oscoda Area First Responders  
Ronald McDonald House of Western Michigan  
Saginaw Valley State University  
St. Joseph Health System Foundation  
Sunrise Side Lifelong Learning  
Tawas Area Education Foundation  
Tawas Area Schools  
University of Michigan  
Whittemore-Prescott Area Schools  
Whittemore-Prescott Education Foundation



Alpena Community College  
Ana's Treasures  
Aveda Institute  
Baker College – Cadillac  
Bowling Green State University  
Brigham Young University  
Central Michigan University  
City of Rose City  
Crawford AuSable Day Care, Inc.

Crawford County Community Christian HELP Center  
Crawford County Historical Society  
Crawford Roscommon Child Protection Council  
Delta College  
Eastern Michigan University  
Educational Support Partnership Foundation  
Ferris State University  
Grand Valley State University  
His Love Family Resources  
Hospice of Helping Hands  
Human Trafficking Community Group  
Iosco County Coats for Kids  
Kirtland Community College  
Lake Margrethe Property Owners Association  
Lake Superior State University  
Lansing Community College  
Macomb Community College  
Madonna University  
Michelson Memorial United Methodist Church  
Michigan State University  
Michigan Technological University  
Mid-Michigan College  
Mt. Hope Evangelical Lutheran Church  
Muskegon Community College  
Northern Michigan University  
Northwestern Michigan College  
Oakland University  
Ogemaw County  
Ogemaw County Humane Society  
Ogemaw Kids Club  
Oscoda County Library  
Oscoda Youth Advisory Council  
Praxis Church  
River House  
Ronald McDonald House of Western Michigan  
Roscommon-Crawford Foster Closet  
Rose City Lupton Festival and Events  
Saginaw Valley State University  
Spring Arbor University  
St. Joseph School  
Tolfree Foundation  
University of Michigan  
Wayne State University  
Wellington Farm Park, Inc.  
West Branch – Rose City Schools  
Western Michigan University  
Young Men's Christian Association of Saginaw



Bois Blanc Island Community Foundation  
Central Michigan University  
Cheboygan Area Arts Council, Inc.  
Cheboygan Area Schools  
Cheboygan Compassionate Ministries, Inc.  
Cheboygan County Junior Golf Academy Foundation

Cheboygan-Otsego-Presque Isle Educational Service District  
Ferris State University  
Finlandia University  
Friends of Inland Lakes Schools  
Grand Canyon University  
Great Lakes Maritime Academy  
Icebreaker Mackinaw Maritime Museum  
Junior Achievement of the Great Lakes  
Kirtland Community College  
Lake Superior State University  
Mackinaw Area Historical Society  
Mackinaw City Area Arts Council  
Mackinaw City Chamber of Commerce, Inc.  
Mackinaw City Schools  
North Central Michigan College  
North Country Community Mental Health  
Northern Care Center  
Northern Michigan University  
Ronald McDonald House of Western Michigan  
Straits Area Services, Inc.  
Transfiguration Episcopal Church of Indian River  
University of Michigan  
Wolverine Community Library  
Wolverine Community Schools  
Young American's College of Performing Arts

## CFNEM STAFF

**Patrick Heraghty**  
Executive Director  
[pheraghty@cfnem.org](mailto:pheraghty@cfnem.org)

**Christine Bruske-Hitch**  
Marketing Communications Director / Affiliate Director  
[chitch@cfnem.org](mailto:chitch@cfnem.org)

**DeeAnn Karos**  
Finance Director  
[dkaros@cfnem.org](mailto:dkaros@cfnem.org)

**Kara Bauer LeMonds**  
Program Officer  
[kbauerlemonds@cfnem.org](mailto:kbauerlemonds@cfnem.org)

**Denise McKenna**  
Executive Assistant  
[dmckenna@cfnem.org](mailto:dmckenna@cfnem.org)

**Julie Wiesen**  
Program Director  
[wiesenj@cfnem.org](mailto:wiesenj@cfnem.org)



P.O. Box 495  
100 N. Ripley, Suite F  
Alpena, MI 49707

Non-Profit Org.  
U.S. Bulk Rate  
Postage Paid  
Alpena, MI 49707  
Permit No. 20

Return Service Requested